

VOLUNTEER TODAY

Dedicate Yourself to Caring for the Land and Serving the People

<http://www.fs.fed.us/r5/angeles/volunteering/>

Los Angeles River Ranger District Volunteer Newsletter May 2013

5 Things That Keep Volunteers Motivated

1: "That's a great idea." Nothing is more motivating than making your own idea a reality. An atmosphere that encourages new ideas not only energizes volunteers; it keeps your group fresh and injects excitement, too.

2: "We're all in it together." If your volunteers feel like part of a team, they'll be more motivated to do their part. A team atmosphere means making sure everybody feels wanted and participates. And it's crucial to break up cliques.

3: "You're really good at that." Use people's talents, not just their time. Not many people will get excited about constantly picking up trash. But if you let the person who loves rebuilding build your mesh walls or the one who's interested in graphic design create your newsletter, they're much more likely to do a great job and want to continue.

4: "How did that go for you?" Check in with volunteers occasionally. Make sure their needs are being met and they haven't become disgruntled. Personal contact lets them know you care about them individually, and it catches potential problems before they become significant.

5: "We did it!" When things go right, share your successes with your volunteers. A shared sense of accomplishment can be a powerful motivator.

Nothing is worse than that moment during an argument when you realize you're wrong

In The Los Angeles Timespg 2
ATTENTION Volunteerspg 3
Volunteers Needed.....pg 4-6
Volunteers At Work.....pg 6-10
Volunteer Training Opportunities ..pg 11-13
Volunteer group newspg 14-25

Electronic copy of Newsletter at:
<http://www.mtlowe.co/VolunteerNews.htm>

Nov 27 1932: page 10.

CREST HIGHWAY WILL BE PUSHED

City and County Leaders meet Tomorrow

Completion of Mt. Wilson Link Planned

High-Gear Road May be Ready in Year

PASADENA, Nov. 26.-- Plans for continuation of the newly opened Angeles Crest Highway to connect with the government highway to Carlton Flats and with roads to hitherto inaccessible mountain districts will be discussed at a banquet Monday night at Switzer Land Resort.

Mayor Porter of Los Angeles and a score of other municipal and county executives have been invited to attend, it is announced by Harold Green, official of the Pasadena Junior Chamber of Commerce, which is sponsoring the movement to open the mountains to the motoring public

PLAN LINK TO DIVIDE

It is understood that the final link of Angeles Crest Highway will be constructed next summer. This link will make it possible for motorists to enter the mountains from Haskell avenue, La Canada, and follow the highway above the west bank of the Arroyo Seco to the red fire box that marks the divide between the arroyo and the West Fork of San Gabriel Canyon.

The Federal government has provided \$75,000 for improvement of the road from this divide to the Mt. Wilson Observatory and Mt. Wilson Hotel. The width of the present one-way road will be doubled.

GREAT ADVANCE

Completion of these projects, according to United States Forest Service officials, will mark the greatest single advance in mountain road building since the Mt. Wilson toll road was completed more than thirty years ago.

Within a year, it now appears provable that motorists who have hesitated to attempt to negotiate the steep toll road grade will be able to scale the 6000-foot peak at twenty-five miles an hour or better in high gear.

IN THE LOS ANGELES TIMES FLASH FORWARD!

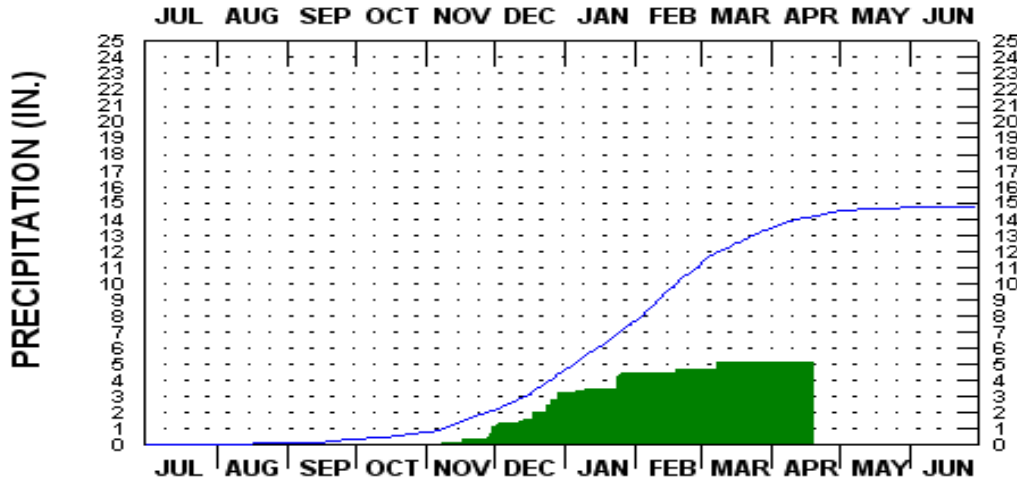
Switzer Land Resort along with the other Arroyo Seco resorts were closed by the city of Pasadena. The action was being taken to protect the city's water supply. City officials have declared that the maintenance of camps in the watershed endangers the sanitation of the water that is to be used for domestic purposes was torn down to protect the water supply of Pasadena. All that remains are the concrete cabin foundations and the stone church arches laying on the ground.

The Mt. Wilson hotel was replaced by the Metromedia Skyline park and TV/radio antenna farm. Then the Metromedia Skyline park closed down and the Cosmic Cafe is located in the former dining area.

The \$75,000 in 1932 dollars spent to improve the road to Mt Wilson from Angeles Crest Highway would cost \$1,179,457 in 2013 dollars

ATTENTION VOLUNTEERS

SEASON-TO-DATE DOWNTOWN LOS ANGELES PRECIP FOR 2012-13 (BARS) VERSUS LONG-TERM AVERAGE (LINE TRACE)



Noting a winter rain and snow season that was largely a no-show, officials raised the Fire Danger level to 'High' in the Angeles National Forest on Friday, April 26. Less precipitation means drier conditions are occurring earlier, which may signal a fire season that begins sooner and with more devastation.

Before venturing out, please contact the Forest Service office for recent information on alerts, advisories, notices and closures.

Angeles National Forest
701 N. Santa Anita Ave.
Arcadia, CA 91006
M-F 8 a.m. - 4:30 p.m.

Voice (626) 574-1613 FAX (626) 574-5207

CRS (800) 735-2922 (Voice) CRS (800) 735-2929 (TDD/TTY)



Don't Forget !
LARRD Volunteer Meeting
May 15, 2015
701 N Santa Anita Ave. Arcadia, CA 91006



AC100 <http://www.ac100.com>

VOLUNTEERS NEEDED

WE NEED VOLUNTEERS:

- 1) help at several aid stations and
- 2) medical volunteers at aid stations i.e. EMTs, First Aid, etc

If you are available on August 3/4, 2013 (Sat/Sun),
ease contact: ken.hamada3@gmail.com Any help will be appreciated.

If you are interested in this Forest Service activity, please contact Dennis Merkel, LARRD Recreation Staff Officer, at (818) 899-1900, ext. 229 or dcmerkel@fs.fed.us.

● **Campground Hosts volunteers!** Los Angeles River Ranger District is in need of volunteers to serve as campground hosts for Monte Cristo, Buckhorn, and Chilao Campgrounds. The satisfaction of helping both the National Forest and its visitors is the Campground Host's greatest reward. By their presence, Campground Hosts minimize vandalism thereby saving the taxpayer many dollars in upkeep and property damage. There is no substitute for the personal touch that makes a camper feel welcome and "at home." Campground Hosts meet visitors from all walks of life, and often fellow campers become lasting friends. Many Campground Hosts and campers return to the same campground year after year, sharing stories of new grandchildren, winter activities, and old memories.

PCTA Trail Gorillas

On May 18 the PCTA Trail Gorillas will hold a trail project in Section E in the northwest corner of the Angeles National Forest.

We'll be brushing the trail in Mile 502 near Bear Campground on Liebre Mountain.

Volunteers should meet at 0715-0730 on Saturday morning at the pullout at the junction of Pine Canyon Rd and Forest Rd 7N23 (labeled "Bushnell Summit" on many maps), here: <http://goo.gl/maps/ABPnV>

A high-clearance vehicle is required to access the area, but riders can recombine into other trucks from Bushnell Summit.

PCTA will supply all equipment, PPE and tools. Volunteers will need to bring leather work gloves, robust footwear, sun protection, long pants / long-sleeved shirts for working in brush; a sack lunch and their water for the day. Only a very short hike is required to access the work.

Feel free to forward this announcement on to other interested parties.

As the date approaches I will provide any additional details to those signing up.

Please respond directly to Section Chief Dave Fleischman owldave57@gmail.com or me hikevv@gmail.com if interested in volunteering.

2013 MOUNT WILSON TRAIL RACE

I am rallying the troops to work on the Mt. Wilson Trail on Sunday, May 12 to get the trail ready for the Mt. Wilson Trail Race on May 25.

We will meet at 8:00A at Lizzie's Trail Inn at Mira Monte and Mount Wilson Trail Road. People need to bring gloves and water. We will work until noon.

People interested in working **MUST** email me at psiberell@santaanita.com so we have enough tools for everyone.

Thanks.

Pete Siberell

Chair, Mt. Wilson Trail Race

Phone: (626) 574-6373 Fax: (626) 821-1530

P 4
vol. 12
Issue 5

VOLUNTEERS NEEDED



CTUC

PROUDLY PRESENTS

OPERATION SUPER CANYON SWEEP-2013

WE NEED YOU
SATURDAY, JUNE 8th, 2013
8 A.M. TO 3 P.M.

**WE WILL BE CLEANING UP THE SAN GABRIEL CANYON.
SAN GABRIEL, OHV AREA, SAN GABRIEL CANYON ROAD,
HWY 39, JUST NORTH OF THE EAST FORK BRIDGE AND
NORTH OF AZUSA**

LUNCH WILL BE PROVIDED

TO VOLUNTEER AND FOR FURTHER INFORMATION PLEASE CONTACT:

**BARRY WETHERBY AT 818-957-1455 E-MAIL BHWetherby@aol.com
3700 Santa Carlotta St., La Crescenta, Ca. 91214**

TERRY KAISER at 818-262-0315 E-MAIL hdconcerns@ca.rr.com

WE NEED LOTS OF VOLUNTEERS.

***CTUC IS A 501 [C] (3) NON-PROFIT CORPORATION,
ALL DONATIONS ARE TAX DEDUCTIBLE!
ID # 95-4690961 & 2028091***

BBB #13191248

P 5 vol. 12 Issue 5

Chilao Visitor Center Creekside Trail Restoration

Date: Saturday, May 4, 2013

Time: 8:00 AM to 2:00 PM

Location: Chilao Visitor Center, Angeles National Forest



Chilao Visitor Center has been closed for several years but is scheduled to open on Memorial Day Weekend. The center needs volunteers to do repairs. The Crescenta Valley Trail Crew will be restoring a 1/4 mile section of the Creekside Trail that starts at the Visitor Center.

No experience is required and we will provide tools. It is required that you wear long sleeve shirt and long pants and work gloves. You will also be required to wear a hard hat. Bring drinking water and lunch.

Option to carpool from La Canada.

To sign up, contact Karen Buehler at 818-363-6216 or Karen.Buehler2@gmail.com

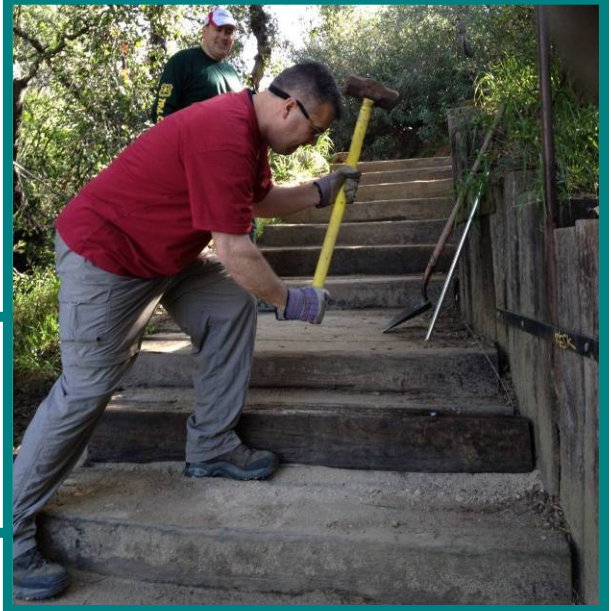
Follow us on Facebook: <http://www.facebook.com/#!/cvtrail.crew> or <https://www.facebook.com/Deukmejian.Wilderness.Park>

We post on Meetup: <http://www.meetup.com/save-socal-trails/>

VOLUNTEERS AT WORK

**Angeles Mountain Bike Patrol
repairing the sunset ridge trail**

Picture by the McGuires



**Getting the Mount Wilson Trial
repaired for the May 25th race.**

Picture by Gary Hilliard

**A switchback on the Mt. Lowe East was
damaged by a tree fall. A JPL trail builder is
standing on the end of the switchback to
assessing the damage.**

Picture by George Aumann

**Adam from the Clear Creek fire crew
had paused his trail patrol and volunteer
in clearing a fallen tree.**

Picture by George Aumann

VOLUNTEERS AT WORK

On California Trails Day about 100 volunteers showed up to work on the lower part of the Grizzly Flats trail. Over a mile of trail was repaired and reworked. Rec -15 and E-13 helped monitor the work and worker safety and communications.

Participants included, LACC, Hart high School Trails Class, National Forest Foundation, Angeles National forest volunteers, and numerous Boy Scout Troops from all over the greater los Angeles area.

The work plan and work safety lecture.



Getting the tools for Trail Work

Ongoing PCT Restoration

A group of 15 dedicated trail maintenance volunteers, led by veteran Pete Fish, with support from the three pack mules Kessler, Westley, and Rascal, brushed and made badly needed spot tread repairs over a mile of the Pacific Crest Trail damaged in the Station Fire. Needless to say this section looks a lot better! Total length of trail restored during two successive maintenance projects is 2.26 miles. Pete and his crew plan to re-inventory 33 miles of the PCT affected by the Station Fire. Armed with GPS, cameras and notebooks, they will be locating and documenting:

- All trees and limbs down blocking or encroaching on the trail
- All burned or dead hazard trees still standing that will conceivably fall on the trail
- Slides or washouts
- Boulders encroaching on or blocking the trail
- Sections of trail that are buried in slough
- Poodle Dog Bush

The results will provide a basis for estimating PCT improvement work still needed.

Supply Delivery for Trail Work



Clearing the trail

VOLUNTEERS AT WORK

Here are some awesome pictures only from yesterday at the Chilao Campground the FOREST AID ANGELES with TreePeople. We planted 1,115 seedlings and we had 134 volunteers.

I had a BLAST with my group of approximately 25 volunteers and 2 more volunteer supervisors. Together we planted at least 200 Jeffrey Pines. It was a very productive weekend up in the mountains.

Now, I have my fingers for all those seedlings to grow big and healthy. I enjoy soooooo much this planting season of the year.

Thank you very much .
Neide Torres

We are ready to plant.



And away we plant!



VOLUNTEER TRAINING OPPORTUNITIES

Deukmejian WP Basic Trail Building Class & Work Day

Date: Saturday, May 18, 2013

Time: 8:00 AM to 1:00 PM

Location: Deukmejian Wilderness Park, 3429 Markridge, La Crescenta, CA

Cost: Free



Basic Trail Building class will cover the following topics:

- Safety Awareness, Tools, Climate
- Hillside Hydrology/How Trails Work
- Tread Work and Cleaning Drainages
- Brushing and Hand Saw Clearing
- Locating New Waterbar Sites
- Constructing New Waterbars
- Checks

There will be instruction in the lower part of the park and then we will hike up one to two miles to practice what we learned.

No experience is required and we will provide tools. It is suggested to wear long sleeve shirt and long pants and wear gloves. Be prepared to hike 2 miles to the area we will be working. Bring drinking water.

You will be asked to complete a City of Glendale Liability Waiver. Must be 16 years of age or older.

Follow us on Facebook: <http://www.facebook.com/#!/cvtrail.crew> or <https://www.facebook.com/Deukmejian.Wilderness.Park>

We post on Meetup: <http://www.meetup.com/save-socal-trails/>

To sign up, contact Karen Buehler at 818-363-6216 or Karen.Buehler2@gmail.com

Angeles National Forest Fire Lookout Association Training for 2013 Season

New Volunteer Training

YOU MUST ATTEND ALL THREE CLASSES, we offer them at two different times. You need to attend only one of each of the classes.

To volunteer and begin training, just show up for the first class.

No RSVP or advanced sign-up is required.

Returning volunteers, please scroll down for Reconnect Class information.

Class 1:

Orientation

- Saturday, May 4, 10:00 am — 12:00 noon
- Thursday, May 9, 6:30 pm — 8:30 pm

Class 2:

Interpretation – Natural History

- Saturday, May 4, 1:00 pm — 4:00 pm
- Thursday, May 16, 6:30 pm — 9:30 pm

Class 3:

Operations

- Saturday, May 18, 9:00 am — 4:00 pm

Any questions? Please goto <http://www.anffla.org/contact/>.

All new volunteer classes will be held at:
Los Angeles River Ranger District Office
12371 N. Little Tujunga Canyon Road
San Fernando, CA 91342

Reconnect (for returning volunteers):

RETURNING VOLUNTEERS MUST ATTEND THIS CLASSES, we offer it at two different times. You need to attend only one of the classes.

Reconnect

- Saturday, May 11, 10:am– 1:00pm
- Thursday, May 23, 6:30pm – 9:30pm

Any questions? Please use our contact form @ <http://www.anffla.org/contact/>

Reconnect Training will be held at:
Los Angeles River Ranger District Office.
12371 N. Little Tujunga Canyon Road
San Fernando, CA 91342

Trail Skills College

Are you looking to learn, improve, or expand your trail maintenance skills?

Grab your boots and head to school! Trail Skills Colleges are open to new and experienced volunteers, hikers, equestrians, and outdoor personnel who would like to learn more about how to maintain their local trails!

What is the Trail Skills College?

Trail Skills Colleges aim to cultivate essential skills in trail reconstruction and maintenance through workshops and trainings that take place on the trail. Trail Skill Colleges are free, 2-3 day events offering hands on experience to all skill levels. Courses will vary by location but may include:

- Basic trail and tread maintenance
- Tread reconstruction
- Drainage design and structures
- Rock work
- Crew leadership
- Certifications (CPR, First Aid, Crosscut, Chainsaw)

Course material is derived from an official Trail Skills College curriculum:

<http://www.pcta.org/help/volunteer/trail-skills-college/curriculum.asp>

PCTA collaborated with many partners to develop the curriculum and worked with USFS Trails Specialist John Schubert to write the documents. Funding was made possible through a grant from REI.

Who teaches the courses?

Courses are taught by professionals and volunteer leaders who have extensive experience in the fields of recreational construction, trail maintenance, and leadership.

- **June 21-23, 2013 Big Bend Skills College @ Hyatt Lake, Oregon**

FOR MORE INFORMATION : <http://www.pcta.org/volunteer/trail-skills-college/big-bend/>

Participants can choose from one of the four tracks being offered Saturday, June 22 and Sunday, June 23. Each track is a full two-day class.

Participants interested in obtaining their crosscut or chain saw certification need to submit a PCTA saw application (you do not need to submit the general Trail Skills College registration form below). Initial saw certifications are a two-day training and will be offered Saturday, June 22 and Sunday, June 23. Recertification's will be held on Saturday, June 22.

Special 1-Day Class: Basic Saw Crew Training (Course 103) - Friday, June 21 only!

Track 1: Basic Trail Maintenance (Courses 100 and 102)

Track 2: Tread and Drainage (Courses 201 and 203)

Track 3: New Trail Construction and Decommissioning (Courses 206 and 207)

Track 4: Crew Leadership (Courses 304 and 400)

Chain Saw and Crosscut Bucking Certification and Recertification

UPCOMING CLASSES:

- **July 12-14, 2013 Tahoe Trail Skills College @ Prosser Reservoir, California**

See note below

- **Fall 2013 Southern California Trail Skills College @ San Bernardino National Forest, Front country Ranger District near Cajon Pass**

See note below

NOTE: Planning is underway for these events! The website will be updated as additional details become available. If you would like to receive email announcements as event details become available please send your name and email address to volunteer@pcta.org.

AC100 <http://www.ac100.com>

By: Hal Winton and Ken Hamada

For schedule: <http://www.ac100.com/index.asp?message=2>

- **The Race: Aug 3rd/4th**
- **May 18th, 7:00AM (Saturday): Trail Work:** (NOTICE: This trail work day restricted to the 1st 25 who call or e-mail Hal that they are coming)
 - Meet at Hahamongna Park-Ball Diamond (see directions below) at 7:00AM.
 - Carpool to work site. (Trucks, SUVs, 4WDs up Mt Wilson Rd . to Idlehour Ckpoint parking).
 - Trail work will be on the Idlehour Trail West Side (High Clearance Vehicles Only,
- **May 19th, 7:00 AM (Sunday): Training Run:**
 - Carpool to Islip Saddle. (Start together please.)
 - Run 27 miles from Islip Saddle to Chilao Flats Visitor Center.
 - Water/Aid at normal Checkpoints between Islip and Chilao Flats.

Altadena Crest Trail Restoration Working Group

626-797-7243 www.altadenatrails.org

Monthly meetings on second Tuesday at Altadena Community Center

Antelope Valley Conservancy www.avconservancy.org

avconservancy@yahoo.com

PHONE (661) 943-9000 Face book: Antelope Valley Conservancy

- Looking for a sustainable gift? Consider giving a Membership in Antelope Valley Conservancy. Only \$25. A gift that keeps on giving.
- If you use Google or any other search engine, please try GoodSearch.com to help us build the Sustaining Endowment. Just type "av conservancy" as your charity and Yahoo donates a penny for each search- at no cost to you! Do it now, so you don't forget. Thank you!

ANGELES NATIONAL FOREST FIRE LOOKOUT ASSOCIATION

<http://www.anffla.org>

Pam Morey pammorey@fs.fed.us

Forest Care Program Coordinator

909-744-9510 ext. 125

New Volunteer Training

- May 4th Class 1 Orientation
- May 9th Class 1 Orientation
- May 4th Class 2 Natural History
- May 16th Class 2 Natural History
- May 18th Class 3 Operations

RETURNING VOLUNTEERS You need to attend only one of the classes.

- May 11th Reconnect
- May 23rd Reconnect



- Help rebuild Vetter Mtn Fire Lookout with a purchase of a reusable tote bag for \$5.
- Help support ANFFLA every time you shop!
Register your Ralphs Club Card and your Food4Less card and ANFFLA will receive a donation every time you shop. It's an easy to help support our efforts and costs you nothing!

Angeles Mountain Bikers and Trail Keepers

Mark Gage mrgy33@hotmail.com

- Trail Maintenance- Gardening by the Mile not the Yard."....
Hikers and Bikers working together on trails.
We work on the trails almost every Saturday.
Our focus trails are Lower Sam Merrill, Castle Canyon and Echo Mt. Trails.

Angeles Mountain Bike Patrol**m.rmeguire@hotmail.com**

Our mission is to provide educational and a responsible image to all trail users. To encourage rider's to obey forest regulations and working to preserve and protect trails. A.M.B.P is here to serve and inform the public.

Audubon Center at Debs Park

4700 North Griffin Ave.

Los Angeles, CA90031 PHONE: (323) 221-2255

Contact : http://debspark.audubon.org/email/1617/field_location_emailCalendar: <http://debspark.audubon.org/events>

Giving just a little bit of your time can make a big difference to the success of the Audubon Center at Debs Park. We offer many opportunities to help us bring people together to appreciate, enjoy, and protect birds and nature.

Arroyos and Foothills Conservancy <http://www.arroyosfoothills.org/>John Howell, (626) 796-0782 johnrhowell@earthlink.net

Face book: Arroyos & Foothills Conservancy

BEAR CANYON TRAIL CREW

Andy Hoyer

abhoyer@yahoo.com 213-675-0420

2013 Schedule

- May 4th 2013
- June 1st 2013

I'd like to continue working in the Bear Canyon itself continuing to try and make our way to the Trail Camp. It's best to get to these areas in the cool months so we don't have to walk so far carrying tools when it starts to get warmer. There is very little in the way of pruning to be done, mostly we'll need shovels, McLeod's, and Pulaski's or pick/mattocks. I'll bring plenty of tools and hard hats but feel free to bring your own if you have them. Please let me know if you are coming and I'll see you on the mountain!

When: Saturday Apr 6th 8:00 am to 2 pm.**Where:** Angeles Crest Highway (1000 Milmada Drive, La Cañada Flintridge, CA 91011)**RSVP** so we can bring enough tools and hard hats for everyone.**Bring** your lunch & plenty of water (2 liters minimum)

Thanks again!

Andy

Big Santa Anita Canyon<http://www.bigsantaanitacanyon.com/>

- May 6th/17th Live Outdoor Music Concerts
- Year round, 6 am to 8 pm every day.

- **The road is gated and the gate is locked at night.**

Be sure to return to your car before 7:30 pm or you may not get out! During and after heavy rains, fires, or after significant earthquakes, and during fire alerts the road may be closed.

- **The Sierra Madre Police Dept. is in charge of locking/unlocking the gate. If you are concerned that the road might be closed you can call them for info: 626 355-1414.**

- **Adams Pack Station Contact:**

Friday, Saturday & Sunday 8:00 am - 5:00pm (626) 447-7356

**Boy Scouts of America
Los Angeles Area Council**

<http://www.laac-hat.org/>

VOLUNTEER GROUP NEWS

Additional Training Opportunities Scheduled for the Future:

- May 4th, Advanced Leader Training (Front Country)
- June 1st, National Trails Day (Basic Techniques)
- Sept. 7th, Advanced Leader Training (High Country)

Blight Busters Trail Crew
Danny Treadway
dayhiker86@yahoo.com

California Trail Users Coalition (CTUC)

<http://www.ctuc.info/ctuc/>

- May 15th meeting

**Come and Join Us CTUC meets on the 3rd Wednesday of every month at 5:00 p.m.
at 3550 Foothill Blvd., Glendale, CA.**

Our meetings are open to everyone who wishes to participate. Volunteers have a great time working together on these types of projects. To volunteer on one of our projects, please join us by calling our Chairman, Terry Kaiser at 818-353-4682. You may also email: edwaldheim@aol.com

- **CTUC MAPS** The first map in our series was completed in 2005 and now, several years later, there are eight maps in print with as many as four more in the works. CTUC maps are unique in that they are not complete inventories of routes. Instead they are travel guides to the area with selected routes shown.

For more information: <http://www.ctuc.info/ctuc/index.php/maps>

CITY OF GLENDALE

Parks, Recreation & Community Services Dept

<http://www.ci.glendale.ca.us/parks/default.aspx> 818-548-2000

CITY OF GLENDALE Parks, Recreation & Community Services Dept

- **May 4th Medicinal Plant Hike**

Time: 9:00 a.m. - 12:00 p.m.

Location: Deukmejian Wilderness Park

Description: Dr. James Adams, USC School of Pharmacy returns to lead a hike through the park as we learn about our native plants and their medicinal qualities.

This program always fills up. You must call (818) 548-3795 to save your spot.

- **May 5th Verdugo Mountains 10K Trail Run and Hike**

Time: 8:00 a.m. - 12:00 p.m.

Location: Brand Park

Register at: www.runtheverdugos.com

Description: Southern California's most exciting trail race is back for a third year! 6.2 miles - 1,735 feet of elevation gain - One Sunday You'll Never Forget!

- **May 18th Wilderness Workday - The Great L.A. River CleanUp**

Time: 8:00 a.m. - 12:00 p.m.

Description: Don't miss out on this opportunity to be a river volunteer on this annual clean up day. Work on the Glendale Narrows Riverwalk may include picking up trash, weed pulling, graffiti removal and more

Space is limited. R.S.V.P. to (818) 548- 3795.

•Interested in helping a mapping team in the Western end of the San Gabriel Mountains? We need people proficient in Map reading, using a compass, and GPS. Contact Dianne if you are interested in joining us: zuliebear@aol.com

• The Community Hiking Club is forming a new trail team. If you are interested in working on the Western, North, South portions of the San Gabriels, and would like to work during the week, or possibly a few Sundays, please contact Dianne at: zuliebear@aol.com

• **May 4th HIKE THE NEW OPEN SPACE in Quigley Canyon.**

The area has 4 loops/trails. Total distance is about 4.0 miles, with a gain of about 400 feet on the one hill. There are easy, moderate and steep areas on these trails, so there is something for everyone. We will be doing all 4 loops. Due to the steep uphill and downhill on one loop, poles are HIGHLY recommended. This will be the last loop that we do, so if you would like to avoid this hill, you can sign out just before we start this last portion. The scenery is lovely, and there is abundant wildlife. We will see the remnants of an old ranch, a working oil company, an intermittent stream, and some very pretty views. This set of trails is very private and quiet. It is bordered by a quiet equestrian neighborhood.

Meet at the trail head at 8:00 for an 8:15 departure.

Directions to trail head: Quigley Canyon is located at the end of Cleardale Avenue, in Placerita Canyon, in the Newhall area. From 13th Street and Railroad, cross the railroad tracks, and stay to the right to proceed onto Placerita Canyon Road. Turn left onto Quigley Canyon Road, and right on Cleardale Avenue. Park at the end of Cleardale Avenue.

Bring lots of water, snacks, and poles. Wear sunscreen, a hat, long pants as some of the trails are a little overgrown, and good boots. You might want to bring your camera to capture some of the interesting sights along the way.

See the website below for a trail map:

http://santaclaritaopenspace.com/images/gallery/open_spaces/quigley/quigley_trail.pdf

Leader: Lise

Rated: Easy (Moderate ++due to the big hill on the last trail, which you can avoid if you only want to do the easy portion)

• **May 11th Boy Scout Trail in Castaic Boy Scout Trail to Whittaker Peak-10 mile RT with 2,000' gain.**

We may see some lovely wildflowers on the Boy Scout Trail. Part of this hike will be on a single track trail, and part of it will be on a fire road. There are some lovely views from the higher areas of this hike, and the area is also loaded with deer. You will also see the weather station on the top of Whittaker Peak.

Meet outside the Towsley gate at 8:00 for an 8:15 departure to the trailhead.

Bring: lots of water and lunch. Poles are also helpful on this hike. Please share the gas with your driver.

Bring your adventure pass if you have one.

Directions: To meet at the Trail head, go north on I-5. Exit Templin Hwy. Turn left. Go under the freeway and turn right on the road immediately past the freeway. Stay on this road until you see a sign on the left side that says Boy Scout Camp. You will park on the street near this drive way. There is very little parking inside, so it is advisable to remain on the street. Meet us on the street. We will walk in together to the trail head. If you meet at the trail head, please be there at 8:40. Please share the gas with your driver.

Leader: Steve **Rated:** Moderate ++

(cont to p 18)

• **May 18th -A Different Approach to Elsmere Open space preserve**

This hike will feature the newest addition to the Elsmere Open Space. It is a great 6 Mile Loop beginning at the Old Newhall Refinery Location. The first half of the hike is a moderate climb up hill to a view of the wonderfully remodeled I-5 14 Fwy Interchange along the Santa Clara Truck trail. Next we turn North thru the Open Space preserve across panoramic views of the Cathedrals at Elsmere Canyon. We will see ruins of oil derricks, Western Union Telegraph Lines and Canopied Oaks that will greet us as we begin the return loop along Dianne's trail.

Meet at Remson Road and Sierra Highway at 8:00 AM for an 8:15 departure from the trail head.

Directions: From the I-5 freeway, take the SR-14 to Newhall Avenue. Exit. The exit will offer a left and a right alternative. **GO TO THE LEFT.** This will take you around a circle to Newhall Avenue. Turn right, under the freeway. Go to Sierra Highway. Turn left. About 1 mile from this point, turn left at Remson Road. Remson road will be blocked with a gate. There is an open space sign at this point. Look for a stone arch on your right as you make the turn. This is a good landmark. You can park on Sierra Highway. **DO NOT BLOCK THE GATE.** Watch for speeding traffic.

Hike Leader Richard and Prince William (the famous backpacking Chihuahua)

Rated Moderate

• **May 25th - Haskell Canyon**

There are 526 acres of new open space in Haskell Canyon to explore. This property contains an abundance of coastal sage scrub, oak woodlands and many threatened and endangered habitat and species. The land has steep hillsides and low valleys and contains a natural intermittent stream that runs through it. It borders the Angeles National Forest to the north. The hike trail is approximately 3 miles long. We will head up the canyon winding along a narrow trail on a slight incline. Around the 1 mile marker we climb up out of the canyon, up a steep but short climb. From there we wind around the ridge of the hills on a power line road. There are great views of Saugus and Bouquet Canyon. We end the loop by heading back down the hill to our cars. This is a great short hike right in the neighborhood.

There is no shade. Wear protection from the sun and bring lots of water and snacks.

Meet at the trailhead at 8:00 to sign in. Hike will depart at 8:15.

Directions: From 5 Freeway. Exit 126/Newhall Ranch Road. Head east 1 mile on Newhall Ranch Road (Right off the off ramp if coming from Los Angeles, Left off the off ramp if coming from Castaic.). Left on Copperhill Drive/Rye Canyon Road. Go 5 miles. You will see a Walgreens at the corner of Copperhill and Haskell Canyon. Keep going on Copperhill Drive. As you head up the next hill, make a left on High Ridge Drive into the suburban neighborhood. Go 600 feet. Right on Ranchview Terrace. Park in the cul-de-sac. Trailhead is at the end of the road.

Directions From 14 Freeway. Exit Golden Valley Road. Head West on Golden Valley Road (Left off the off ramp if coming from Los Angeles. Right if coming from Palmdale.). Take Golden Valley Road 5 miles. Right on Bouquet Canyon Road. Go 2 miles on Bouquet Canyon Road. Left on Haskell Canyon Road. Go 1 mile up Haskell Canyon Road. Right on Copper Hill Drive. As you head up the hill, make a left on High Ridge Drive into the suburban neighborhood. Go 600 feet. Right on Ranchview Terrace. Park in the cul-de-sac. Trailhead is at the end of road. Signs are posted at the trailhead. Look for the American Flag to find your leader!

Leader: Steve **Rated:** Easy

Concerned Off-Road Bicyclists Association (CORBA)

PHONE: (818) 773-3555

FACE BOOK: <http://www.facebook.com/CORBAMTB>

<http://corbamb.com/>

For schedule goto: <http://corbamb.com/Calendar/index.shtml>

• **May 6th COSTAC Monthly Meeting** The Conejo Open Space Trails Advisory Council meets the first Monday of the month to discuss Conejo Open Space Conservation Agency trails issue. The public is welcome to attend. **For more information, contact Nicole Tindell, 805-495-0545.**

• **May 27th Monthly CORBA Board of Directors meeting.** All are welcome

• **June 1st National Trails day**

The Concerned Off-Road Bicyclists Association (CORBA) is an all-volunteer non-profit organization serving the mountain bicycling community of Los Angeles and its surrounding areas including southern Ventura County.

We are dedicated to preserving open space, maintaining public access to public lands, and creating more trail opportunities for all to enjoy. We are a chapter of the International Mountain Bicycling Association.

Crescenta Valley Trail Crew aka CV Trail Crew

Karen Buehler 818-363-6216 karen.buehler2@gmail.com

Face book: <http://www.facebook.com/#!/cvtrail.crew>

• **May 4th Chilao Creekside Trail Restoration in Angeles National Forest**

• **May 18th Basic Trail Construction Class at Deukmejian Wilderness Park**

• **May 10th/24th Trail Maintenance at Deukmejian Wilderness Park**

Crescenta Valley Trail Crew has been restoring trails in 2009 Station Fire Area in Deukmejian Wilderness Park. Now that restoration at Deukmejian is complete, we are working on various projects in Angeles National Forest.

Friends of El Prieto Trail

bannermoffat@earthlink.net

An organized group of individual working on improving the trail to pre fire condition. If interested in assisting, please contact Banner Moffat by e-mail.

- - Banner Moffat

HABITAT WORKS

<http://www.habitatwork.org>

Kim Clark or Tom Persons 818-353-4653

Habitat Works - Volunteers Improving Wildlife Habitat

Haramokngna American Indian Cultural Center

www.haramokngna.org

- **June 6th, Annual Yucca Workshop**

In this workshop we will show you the many uses of Yucca. For centuries, it has been used for food, clothing, soap, rope fiber, and much more.

- **Stop by our Center any weekend from 10am – 4pm.** We are happy to answer any questions about Native American culture, the Angeles National Forest, hiking trails, camping, etc. We have ample parking out front.

- **Volunteers** As a cultural, environmental and arts organization, Haramokngna American Indian Cultural Center shares the flavor of Native American history, culture, traditions and arts with the Los Angeles community. We are always looking for energetic individuals ready to represent the Cultural Center during special events and regular office hours.

- **Check the Pukuu's Amazon Store** <http://astore.amazon.com/pukucultcomms-20>

When you order items thru our store, A percentage is donated to our center. THANK-YOU

- **We are open Sat & Sun from 10-4**, and by appointment for groups during the week. We now have an answering machine (if the electricity is working) at the Center – 663-449-8975.

- **The US Forest Service** requires all parked cars in the Angeles National Forest (including at Haramokngna) to display a parking pass.

Passes can be purchased at our Visitor's Center for \$5.

High Country Riders

Forest wide equestrian volunteer group that patrols trails and can pack Trash, Rubbish, Equipment, Material and Supplies etc...to your Trail or worksite.

Contacts: Jonathan Schultz 951-830-3400 maujds@earthlink.net

Forest Certified Animal Packer,

Master Teacher for “LNT Chainsaw & Crosscut Saw Certified Volunteer.

Glen Foster 760-868-8313 or 760-508-0344

Dave Ewbanks 909-489-5470

JPL TRAILBUILDERS

Kathie Reilly 818-354-8321 (JPL) 626-798-7256 (home)

Jack Russell 562-861-3187

- **May 11th Outing**

- **June 1st, National Trails Day**

Meet at 8:15 AM at ball diamonds parking lot in the lower part of Hahamongna Park.

WHAT HAPPENED: We have removed the downed tree on the Mt Lowe East Trail.

Matt Maxon

matt@mattmaxon.com

VOLUNTEER GROUP NEWS

Continuing to work on the Stone Cyn Trail. No set schedule. Hope to get out for 1 day at least, every month. I'm very flexible. If you want to come out contact me and we'll work something out. Brush clearance top down is my main focus right now, but there is plenty of tread that needs work, switch backs that need to be rebuilt, and 2 slide areas / washouts that need something done with them.

Mt Disappointment 50K Conservation Group

www.mtdisappointment50k.com Gary Hilliard, Director

- Mt Disappointment Endurance Race will be July 13, 2013.
- Trail work will be:

May 4th - Kenyon Devore

June 1st – National Trail Day (Kenyon Devore)

Trail-work meeting place: (Meeting time is 7:00am for 2013)

Directions: From the 210 Freeway exit at Angeles Crest Hwy (CA-2) and go North 0.1 miles.

Pull into the frontage road on the East side (right side) of Hwy 2 and park facing South, away from the residences.

You MUST e-mail Gary at gary@mtdisappointment50k.com during the week before the trail-work day so we have enough tools!!

Mount Wilson Bicycling Association

Ray Herrera <http://mwba.org/>

- June 1st National Trails Day

GO HERE TO BECOME A MEMBER <https://www.imba.com/civCRM/contribute/transact?reset=1&id=124>

Mount Wilson Race <http://www.mountwilsontrailrace.com/MWTR/HOME>.

- May 12th trail work day

We will meet at 8:00A at Lizzie's Trail Inn at Mira Monte and Mount Wilson Trail Road. People need to bring gloves and water. We will work until noon. People interested in working MUST email me at psiberell@santaanita.com so we have enough tools for everyone.

- May 25th RACE IS ON!

The Mt. Wilson Trail Race is sold out. We have a large waiting list as well. Information about the race can be found at www.mountwilsontrailrace.com.

Pete Siberell

Chair, Mt. Wilson Trail Race

Mount Wilson Institute

P. O. Box 1909, Atlanta, Georgia 30301-1909

(404) 413-5484 <http://www.mtwilson.edu/>

Cosmic Cafe (626) 440-9018

- **Cosmic Cafe is opened Please note that we will NOT be open on Fridays this year, but we're excited to see you on Saturdays and Sundays and some holidays 10am-4pm.**
 - **For directions** or more information please visit www.mtwilson.edu
 - **The USFS requires** that all parked vehicles display an Adventure Pass.
 - **The Cosmic Cafe sells** the Adventure Pass during our operating hours.
 - **A day pass** is \$5.00 and an annual pass is \$30.00
 - **There is a guided walking tour** every Saturday and Sunday (from April 1st - November 30th) at 1pm, tickets are sold at the Cosmic Cafe and are \$10.00 for adults and \$8.00 for kids and seniors.

Support Mount Wilson Observatory

We Need Your Help - Mount Wilson Observatory is privately owned and receives no continuing state or federal support. You can help ensure the continued operation of this science heritage site with your tax deductible gift in one of two ways:

- 1 Join our Friends of Mount Wilson Observatory organization** to receive a variety of member benefits and stay informed on the latest scientific and other activities from the mountain.
- 2 Contribute to our Second Century Campaign.** As Mount Wilson continues into its second century, a capital campaign is being developed to preserve this great observatory for future generations.
- 3 Be a Docent Tour Guide** - We welcome applications from individuals interested in participating as Docents in our very active guided tour programs.
For application information go to: <http://www.mtwilson.edu/docents.php>.

Pacific Crest Trail Association

<http://www.pcta.org> **FACE BOOK:** <http://www.facebook.com/#!/PCTAFan>

Liz Bergeron lbergeron@pcta.org

Sacramento, CA Phone: (916) 285-1846 x 2

- **May 18th PCTA Trail Gorillas will hold a trail project in Section E in the northwest corner of the Angeles National Forest.**
- **June 21st-23rd, 2013 Big Bendail Skills College @ Hyatt Lake, Oregon**
- **Jan 1st - Dec 30th. 'Fannypack' Projects [FALC]. SBNF, ANF, CNF, and BLM.**
Swat teams to inventory trail, clear trees and boulders, and repair slides on short notice.
Open to qualified volunteers.
Contact: Pete Fish, Email: pickaxepete@sbcglobal.net, Tel.: 805-658-6540
or: John Hachey Email: goaliejhachey@msn.com, Tel.: 909-605-3219.
- **Join us! The Pacific Crest Trail is more than a trail from Mexico to Canada. It is a community that stretches around the world. Come out and play.** <http://www.pcta.org/get-involved/>

Play in the dirt, Meet new people, Sleep under the stars.

Pacific Crest Trail maintenance volunteers are needed throughout California, Oregon, and Washington to help repair erosion problems, clear fallen trees, and remove encroaching brush. Help make the hiking and equestrian experience a better one now and for future generations.

Volunteers can head out for the day, a weekend, or longer with car and backcountry camping options available. There are no fees to volunteer and meals are included at our overnight events. Prior trail maintenance skills are not needed on most projects, experienced crew leaders are there to teach you the skills needed. To learn more contact Merrit Hoeh at (916) 285-1838, volunteer@pcta.org OR check out the volunteer schedule at www.pcta.org.

Have an adventure of a lifetime by volunteering on the Pacific Crest Trail!

SAN GABRIEL TRAILBUILDERS

<http://www.sgmtrailbuilders.org>

Helen Oakley: 626-792-4573

Ben White: 626-303-1078 ben@sgmtrailbuilders.org

VOLUNTEER GROUP NEWS

We work on the first, third, and fifth Saturday of each month Trail working volunteers may join the San Gabriel Mountains Trailbuilders in the continued restoration process for trails in and around Crystal Lake and if you would like to volunteer your time, please send e-mail to volfeedback@crystallake.name I will let you know when, where, and what you need to know to join us.

MEETING LOCATION

: San Gabriel Canyon Gateway Center, 1950 North San Gabriel Canyon

SCENIC MT. LOWE RAILWAY

<http://www.mtlowe.co>

Brian Marcroft 562-868-8919 E-mail: Emworks@verizon.net

Sierra Club

www.angeles.sierraclub.org/pasadena/

Sierra Club-Pasadena Group

P.O. Box 94086

Pasadena, CA. 91109-4086

(626) 791-7660

For more calendar details go to http://www.angeles.sierraclub.org/pasadena/outings_3mos.html#may

• May 1st 7:30 pm Pasadena

Monthly Meeting: San Pedro resident and activist **Tom Politeo** presents a program on the activities of the Sierra Club's Harbor Vision Task Force in addressing the serious air pollution problems generated by the Ports of Los Angeles and Long Beach. Information on Group's hikes, outings, and conservation activities.

Newcomers always welcome. 7 pm at Eaton Canyon Nature Center, 1750 N Altadena Dr in NE Pasadena. For information contact **Membership Chair: Elizabeth Pomeroy 626-791-7660** ewpomeroy@sbcglobal.net

• May 2nd/16th/23rd/30th Henninger Flats Conditioning Hike

• May 5th La Cañada Trails Day

• May 5th 24th Annual Beginning Backpacking Class in the Redwoods - Second Class Session.

• May 4th Greene and Greene Northwest Pasadena Walking Tour

• May 8th/22nd Evening in the Arroyo

• May 11th Eaton Saddle to Red Box via Valley Forge Camp on the West Fork

• May 19th Glendale Peak (1184')

• May 5th 24th Annual Beginning Backpacking Class in the Redwoods - Third Class Session

• Jun 1st Islip Saddle to Mt. Hawkins (8850')

• Jun 1st Greene and Greene at the Huntington

• Jun 1st Newcomers Potluck

• Jun 1st & 2nd 24th Annual Beginning Backpacking Class in the Redwoods

• Jun 2nd Chilao to Mt Hillyer (6215')

• Jun 6th 7:30 pm Pasadena

Monthly Meeting: Joan Holtz, a member of the Sierra Club's national Population Committee, presents a program featuring the new documentary "Mother: Caring for 7 Billion" highlighting the humanitarian and environmental crises created by the world's exponential population growth. Information on Group's hikes, outings, and conservation activities. Newcomers always welcome. Doors open at 7 pm at Eaton Canyon Nature Center, 1750 N Altadena Dr in NE Pasadena. **For information contact Membership Chair: Liz Pomeroy**

626-791-7660 ewpomeroy@sbcglobal.net

SOUTHERN CALIFORNIA MOUNTAINS FOUNDATION

<http://mountainsfoundation.org/>

Sarah Miggins smiggins@fs.fed.us 909-382-2796
602 South Tippecanoe, San Bernardino, California 92408

VOLUNTEER GROUP NEWS

- **Build a Birdhouse** May 11th/25th
- **Discovery Center Canoe Tours** May 26th
- **Discovery Center Kayak Tours** May 25th/26th
- **Discovery Center Mid -day Discount Kayak Tours** May 25th
- **Discovery Center Yoga** May 4th/25th
- **Gold Panning** May 25th/26th
- **Greenthumb Restoration Volunteers** May 11th/18th
- **International Migratory Bird Day** May 11th
- **Nature walks** May 4th/5th/11th/12th/18th/19th/26th
- **Pinecone Birdfeeders** May 26th
- **Wrightwood Fire Safe Council** May 21st

Volunteer Become a Discovery Center Volunteer!

If you enjoy the forest and would like to help visitors learn about our local mountains, then the Discovery Center has a volunteer opportunity for you! You'll be joining over 100 other volunteers who enjoy meeting Discovery Center visitors and helping them get the information they're looking for such as where to hike, camp, picnic, go off roading, etc. Help families and students learn about the forest through our naturalist table, nature walks and school programs. You'll have a chance to visit with people from all over the world. Volunteers are asked to donate 8 hours of their time a month, or more if they want to.

We need volunteers to help with a variety of jobs, including:

- Greeters
- Information Specialists
- Gift Store Assistants
- Naturalist
- School and scout program leaders
- Nature Walk Guides
- Weekend activities assistants, such as gold panning, animal tracking and nature crafts
- Assist with special event, including concerts and festivals

We teach you everything you'll need to know!

If you are interested in one of the following positions or would like to attend an orientation session please contact:

Wendy Craig
Big Bear Discovery Center Volunteer Coordinator
(909) 382-28403

wcraig@mountainsfoundation.org

Tree People <http://www.treepeople.org>

12601 Mulholland Drive

Beverly Hills, CA 90210 Telephone (818) 753-4600 FACEBOOK: Tree People

For more calendar details go to: <http://www.treepeople.org/calendar/2013-05>

- **Campus Tree Care** May 4th/16th/30th
- **Branching Out Community Tree Walk** 19th
- **Citizen Forestry: Tree Planting** May 4th
- **Native Plants and Turf Reduction** May 4th
- **Park Tree Care** May 4th/11th/18th
- **Street-Residential Combo Tree Care and Planting** May 25th
- **Street-Commercial Tree Care** May 26th
- **Moonlight Hike** May 25th
- **Rainwater Harvesting Workshop** May 4th
- **Speakers Bureau Training** May 4th
- **Park Work Day** May 2nd/9th/11th/16th/23rd/30th
- **Santa Monica Mountains Restoration** May 5th/11th/18th/19th

William S Hart UHSD of Santa Clarita ANF Crew 5130

VOLUNTEER GROUP NEWS

Kevin Sarkissian 661.250.0022 X 552 ksarkiss@hartdistrict.org

William S Hart's Regional Occupation Training Program will continue offering "Outdoor Recreation and Wilderness Conservation" as a joint training venture between WS Hart Union High School District, the USFS, PCTA, and MRCA. In addition to high school credit, the student participants may be offered paid work experience while gaining practical exposure to land management practices and career pathways related to work in the great outdoors including; trail maintenance and construction; wildlife identification and conservation; backcountry navigation; environmental stewardship; wilderness first aid; and much more!

For more information, contact Kevin Sarkissian at: ksarkiss@hartdistrict.org 661.250.0022 X 552 or visit us on the web at: www.hartrop.com/forestry.



Volunteers of the Angeles National Forest

Wrightwood, CA <http://www.grassyhollow.net>

Visitor Center Phone #: (626) 821-6737 Loren Lake lorenll@verizon.net

• **May 25th 10:00 AM and 1:00 PM Pacific Crest Trail Hike**

Choose your time to go hiking on the famous Pacific Crest Trail with a knowledgeable and experienced volunteer. **Time:** Approx. 1 ½-2 hours. Easy hike. Beautiful views. Bring your camera!

Location: Grassy Hollow Visitor Center

Leader: Sabrina Johnson, VANF

• **May 26th 1:00 PM A Showing of MEMORIAL DAY (104 min)**

Join us for an afternoon showing of an excellent movie, "Memorial Day" with Jonathan Bennett, John Cromwell, and James Cromwell, with permission of Image Entertainment. On Memorial Day 1993, 13-year-old Kyle convinces his grandfather, Bud (Oscar nominee James Cromwell), to share the heroic and sometimes grueling stories of his days as a soldier in WWII. Then, tying past to present, a grown-up Kyle finds the same sorts of victories and scars on the battlefield in modern day Iraq.

Location At Grassy Hollow Visitor Center.

• **June 1st 1:00 PM Forecasting Earthquakes? Approx. 1 hour.**

Can anyone forecast earthquakes? Come to Grassy Hollow Visitor Center and hear an authority in the field discuss what is involved in forecasting earthquakes. She can give you a different perspective of what we live with in Southern California every day.

Leader: Joan Fryxell, Ph.D., Structural Geology and Tectonics, Cal State San Bernardino.

• **June 2nd 1:00 PM Hug-A-Tree**

Do you know what to do if you are lost in the mountains? Learn how to keep from getting lost and to learn what to do to make it easier for someone to find you. This is a very important program, particularly for children. **Time:** Approx. 45 minutes.

Location: Grassy Hollow Visitor Center Amphitheater

Leader: Tom Schneider, Sheriff Search and Rescue.

The Grassy Hollow Visitor Center and Grounds are open for day-use only

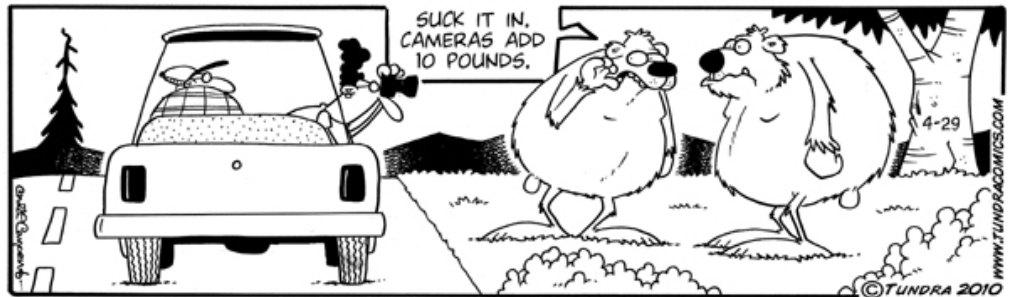
Hours: Saturdays, Sundays and Holidays 10:00 am to 4:00 pm

Weekdays- for school groups, youth organizations, etc.

By Appointment

Los Angeles River Ranger District
12371 North Little Tujunga Canyon Road
San Fernando, CA 91342

TUNDRA by Chad Carpenter, Los Angeles Times April 29, 2010 email: info@tundracomics.com



Volunteer Today
Send this in Right Away to
Dennis Merkel —12371 N. Little Tujunga Canyon Rd
San Fernando, CA 91342

Name _____

Address _____

Phone # (hm) _____

e-mail _____

Interests

Indicate what you would like to do. Circle area or enter your interests.
Campground Host/ Visitor Information/ Smokey Bear - Fire Prevention/
Recreation Aid / Forest Patrol /Resource Management / Computers/
Research-Librarian / Office Clerical / Tour guide/ Fire Lookout/
Conservation Education / habitat restoration and tree planting
Other: _____