

VOLUNTEER TODAY

Dedicate Yourself to Caring for the Land and Serving the People

<http://www.fs.fed.us/r5/angeles/volunteering/>

Los Angeles River Ranger District Volunteer Newsletter June 2014

U.S. Drought Monitor West

May 20, 2014

(Released Thursday, May 22, 2014)

Valid 8 a.m. EDT

Drought Conditions (Percent Area)

	None	D0-D4	D1-D4	D2-D4	D3-D4	D4
Current	31.18	68.82	60.82	47.50	20.37	4.81
Last Week <i>5/13/2014</i>	31.18	68.82	60.82	47.37	19.96	4.70
3 Months Ago <i>2/18/2014</i>	21.76	78.24	59.88	40.17	14.89	2.58
Start of Calendar Year <i>12/31/2013</i>	22.20	77.80	51.44	31.11	7.75	0.63
Start of Water Year <i>10/1/2013</i>	25.25	74.75	58.96	34.18	5.57	0.63
One Year Ago <i>5/21/2013</i>	13.30	86.70	71.40	47.04	15.04	5.99

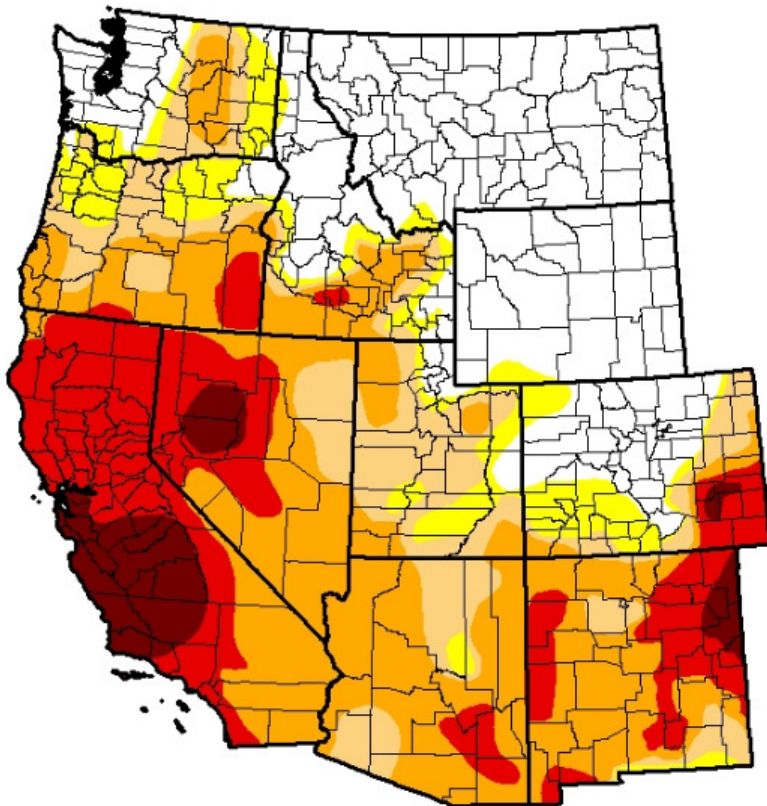
Intensity:

- D0 Abnormally Dry
- D1 Moderate Drought
- D2 Severe Drought
- D3 Extreme Drought
- D4 Exceptional Drought

The Drought Monitor focuses on broad-scale conditions. Local conditions may vary. See accompanying text summary for forecast statements.

Author:

Michael Brewer
NCDC/NOAA



<http://droughtmonitor.unl.edu/>

In The Los Angeles Timespg 2
Los Angeles Times Flash Forward.....pg 2
Volunteers Announcements.....pg 2-3
Training opportunities.....pg 4
Driven Out: Louis Newcomb, the Last Mountain Man of the San Gabriels..... pg 5-8
May Meeting minutes.....pg 9-10
Volunteers Needed.....pg 10-12
Volunteer Fund raiser.....pg 12
The history of Placerita Canyon Natural Area.....pg 13
Volunteers At Work.....pg 14-15
Angeles Mountain Bike Patrol has reported a bear at La Cañada Memorial parade.....pg 24
Volunteer group newspg 16-28

Electronic copy of Newsletter at:
<http://www.mtlowe.co/VolunteerNews.htm>

**WHAT A WONDERFUL THOUGHT
IT IS THAT SOME OF THE BEST
DAYS OF OUR LIVES HAVEN'T
HAPPENED YET.**

Fire Razes Mt. Low Building; Let it Burn, Say Authorities

"Fire on Mt. Lowe?" (Yawn.) "let it --(yawn)burn!" So they did.

Early Yesterday, high on Echo Mountain on the incline leading to the now-abandoned Mt. Lowe resort, valley residents saw flames etched against the darkness.

Hundreds of calls flooded Pasadena police-station switchboards.

Finally police called the County Forestry Department.

"Seems," they observed, "to be a fire on Echo Mountain."

"Yeah? Well--that's Federal territory."

But the United States Forestry Service didn't care much either.

"Let it burn," they said. "It can't hurt anything. Everything's wet."

Even the Pacific Electric Railway evinced less than tepid interest.

"That place," a spokesman offered, "is deserted. It's nothing but a two-room shack anyhow. Let it burn."

Nobody bothered to trek up the steep slope after daybreak to inspect the ruins. But it made a dandy spectacle while it lasted. Besides, the building that burned was only the deserted P.E. way depot halfway up Mt. Lowe.

What started it? Maybe somebody wanted to keep warm.

IN THE LOS ANGELES TIMES FLASH FORWARD!

The Mt. Lowe railway opened on July 4, 1893 and was met with quick interest and success. For the seven years during which Lowe owned and operated the railway, it constantly ran into hard times. The railroad was placed into a foreclosure sale on March 28 1899. The Mount Lowe Railway was officially abandoned in 1938.

VOLUNTEER ANNOUNCEMENTS

Dear Angeles National Forest Volunteers:

Well, it's official -- Spring has arrived on the Angeles! Now is a good time to get out your calendars and mark these important dates -- all guaranteed to provide you with a great volunteer experience:

- * National Trails Day (June 7, 2014)
- * Operation Super Canyon Sweep (June 14, 2014)
- * L.A. County Fair - America's Great Outdoors (August 29 - September 28, 2014)
- * National Public Lands Day (September 27, 2014)

You can read about these projects and more in the attached April 2014 edition of the ANGELES NATIONAL FOREST VOLUNTEER PROJECT DIRECTORY, which will soon be posted on our website at

<http://www.fs.usda.gov/main/angeles/workingtogether/volunteering>

The Volunteer Feature in this edition shines the spotlight on the Rotary Interact Clubs of Bassett and Glen A. Wilson High Schools, who pitched in to help clean up the East Fork of the San Gabriel Canyon on March 22, 2014 (p. 16-17). Our thanks to them and to all of you for the many ways you care for the Angeles National Forest and serve the people who use and enjoy it.

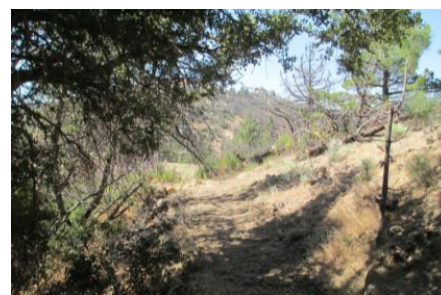
Serving thankfully with you,

Kathy Peterson
Volunteer/Partnership Program Consultant
Angeles National Forest

VOLUNTEER ANNOUNCEMENTS



National Trails Day 2014



DATE: Saturday, June 7, 2014, sign-in between 8:00-8:30 am. Event scheduled from 8:30am-3:30pm.

LOCATION: Meet at the Chilao Visitor Center parking lot in the Angeles National Forest.

EVENT: Celebrate National Trails Day on June 7, 2014. The celebration will include 4-6 hours of trail work on trails in the area, such as the Silver Moccasin Trail, Chilao Nature Trail, and Devils Canyon Trail. This event is co-sponsored by the National Forest Foundation, REI and the US Forest Service. We will break for lunch and a short ceremony about National Trails Day at 1:00 pm near the Chilao Visitor Center. Activities will end at 3:30 pm. This activity is open to all volunteers, including sponsored groups. Those who are volunteering for trail work for the first time, please identify yourself to the registrar at the meeting site so we can arrange for a Trail Boss to provide instruction and proper tools. Please bring your lunch and personal equipment listed below.

Personal Equipment to Wear while Working: Long sleeve shirt, long pants, gloves, and boots are required. **ANYONE NOT WEARING REQUIRED CLOTHING WILL NOT BE ALLOWED TO WORK** (Anyone wearing shorts will not be allowed to participate.) Sun protection hat, hard-hat (if available – can be provided if needed), Ten Essentials (include a personal First Aid kit), water (2 Quarts), snacks, etc. Be prepared to hike about a mile and work until 12:30. You will be able to eat your lunch near the Chilao Visitor Center.

DIRECTIONS: From the 210 Freeway in La Canada, go north on Angeles Crest Highway (CA 2) Take the Highway 2 North exit from the 210 Freeway and continue approximately 27 miles to the Chilao Visitor Center on the left (if you pass Newcomb's Ranch Restaurant you've gone too far). Park in the parking area to the right of the Visitor Center. Allow one hour driving time from the 210 Freeway. Please carpool if possible.

For Additional Information, Contact One of the Following:

USDA Forest Service, Los Angeles River Ranger District, Little Tujunga Ranger Station

(Daytime): Dennis Merkel, District Recreation Officer

(818) 899-1900 X229 email: dcmerkel@fs.fed.us

(Evening): David Ledford, Volunteer Leader, Training

(310) 373-2111 email: GDLedford@verizon.net

TRAINING OPPORTUNITIES

HAT Training VHC WLACC 2014

**Become a USFS approved Trail Boss
Supervise Trail Maintenance
for the youth in your group.
(Great Eagle Projects!)**



A GREAT TRAINING PROGRAM NOT ONLY FOR BOY SCOUTS BUT FOR ALL VOLUNTEERS!

**Let us train you and other adults in your group
so that you are qualified to do Trail Surveys and set up projects
and complete them on your own.**

Purpose:

To provide properly trained personnel with the ability to supervise either "Trail Blazing" or "Forest Conservation" program projects at the unit level.
All Trail Bosses will be trained by USFS Personnel or their approved Trail Boss Trainer.

Requirements:

Must be 18 or older.

Complete 4 days of 6 hours each in training exercises with the Trail Boss Program.

Conduct an approved Weekend project. Minimum 10 hours with your unit. (or another unit) under your supervision, and have it checked out by the Trail Boss trainer.

(Training days do not have to be consecutive days, weeks, or even years).

Training objectives are Tool, Personal Safety, Condition Survey, Brush Clearing, Tread Work, French Drains, Trail Dips, Soil Sacks, Water Bars, Switchback Construction, Tread Support, Etc.

Bring: Gloves, Hat, Water and Lunch, 10 essentials, Day pack, Work clothes.

Next training day: Sept 6th

**Call to confirm training day, Time and Meeting Place. (Course cancels if no calls)
We meet at McDonalds at Bouquet Cyn. Rd. & Valencia Blvd, in Valencia at 8:00 AM.**

Contact:

**Patrick Aubuchon, Chief Trail Boss.
818-781-7465 - bigaub@sbcglobal.net**

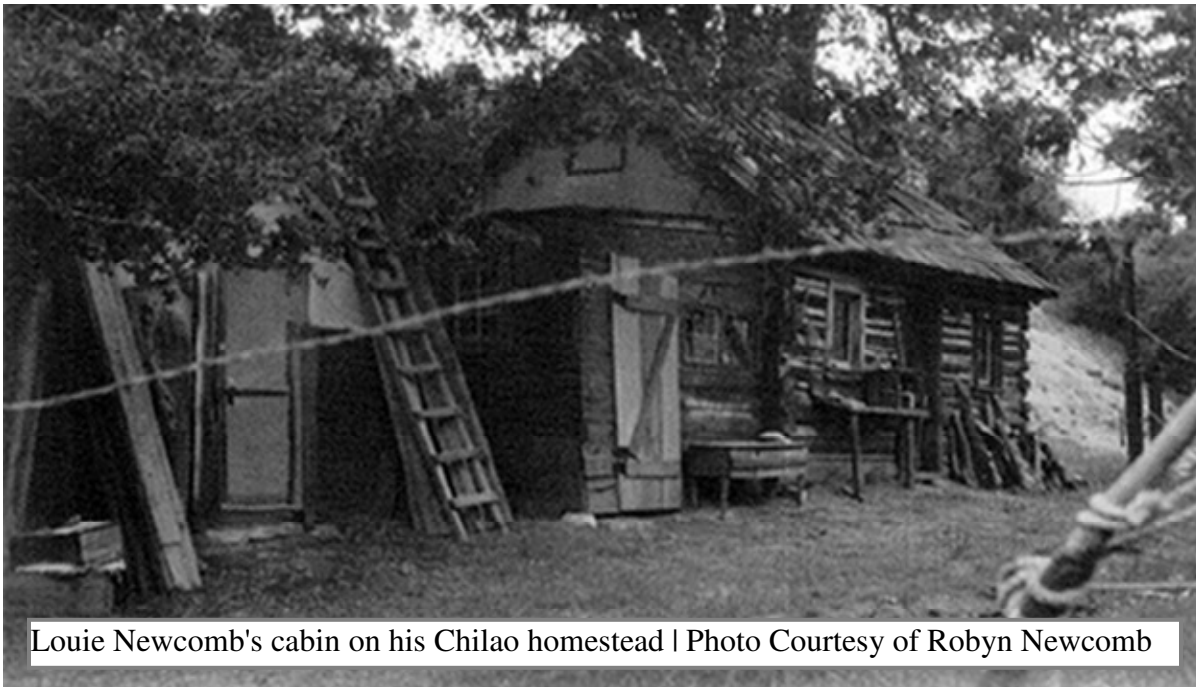
Driven Out: Louis Newcomb, the Last Mountain Man of the San Gabriels

By Daniel Medina |

In late September 1939, the heart of the San Gabriel Mountains was breached. The aggressive might of the Angeles Crest Highway finally carved its way into the forested flatlands of Chilao, roughly thirty miles from the highway's origin in La Cañada.

Populated by flush strands of big cone spruce, incense cedar, and Jeffrey pine, Chilao was host to plentiful picnic grounds and camping sites developed by the Civilian Conservation Corps. Upon reaching the major recreational area at the then-terminus of the highway, motorists undoubtedly marveled at the ease at which this former isolated wilderness was now accessible to the public.

Not everyone was celebrating the achievement. Louis Newcomb, a pioneer and former forest ranger who had settled in the area in the late 1880s, despised the crowds that the road brought to his once-quiet mountain hearth. Newcomb, in his late eighties by 1939, was a living legend in the San Gabriels. Few people had been a first-hand witness to the transformation of the mountains' wild interior over the past five decades.



Louie Newcomb's cabin on his Chilao homestead | Photo Courtesy of Robyn Newcomb

Like outlaw **Tiburcio Vasquez** before him, Newcomb was drawn to the sheltered woodlands of Chilao when he first arrived from Iowa to Los Angeles in the late nineteenth century. An expert carpenter by trade, Newcomb built a cabin here in 1890 and soon after filed for 160 acres in the area under the Homestead Act. The self-reliant pioneer's life boasted a routine of hunting deer and grizzlies, mountaineering, and welcoming hunters and herders to his humble abode; above his door a sign read, "Meals at all hours." His Chilao was a free range, its natural resources open to the **damaging escapades of herdsman, axemen, and riflemen.**



Louis Newcomb stands second from right
Photo: mountwilsontrailrace.com

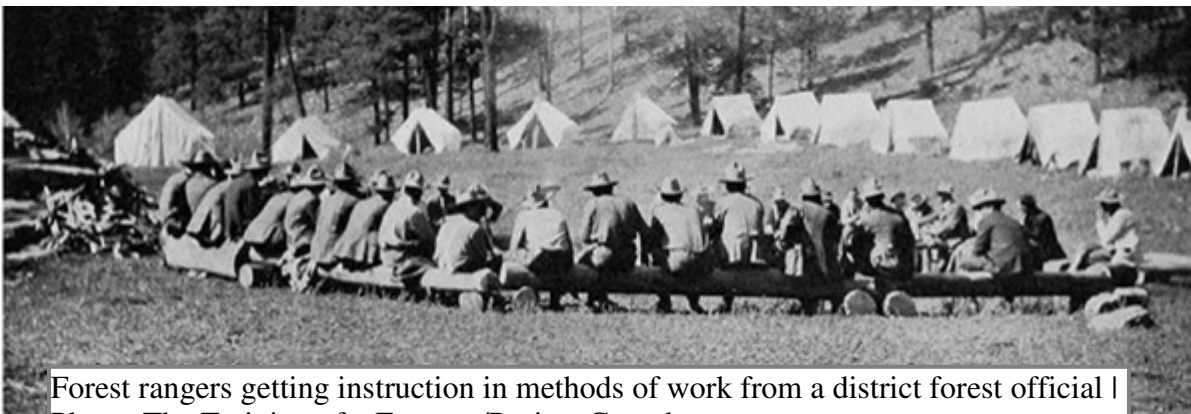
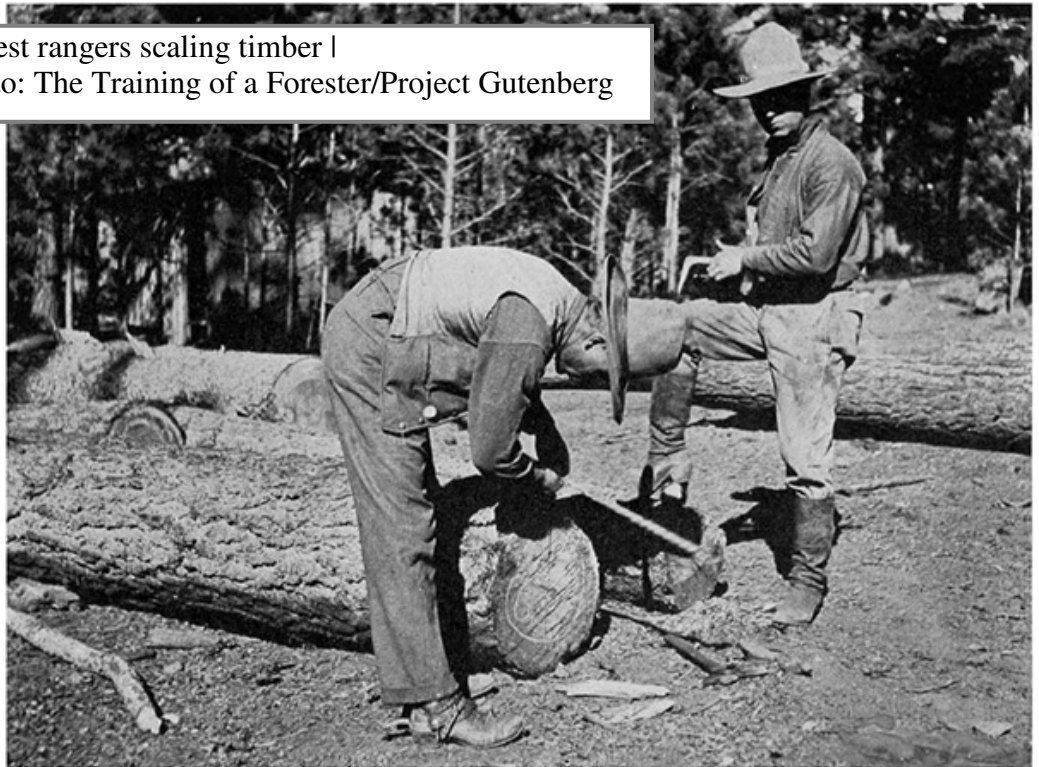
Driven Out: Louis Newcomb (CONT)

The forest conservation movement in Los Angeles, however, would soon end the era of exploitation in Newcomb's Chilao. Through the local advocacy and clout of Abbott Kinney, management of unregulated wilderness like the one found in the San Gabriels was made an urgent matter on the national stage. Kinney, founder of Venice of America, an Altadena rancher, and also a chairman on California's first Board of Forestry, feared the destructive consequences that unchecked manipulation of mountain resources would have on its vital watershed that contributed to the growth of Los Angeles. The first report from Kinney's State Board of Forestry concluded:

**The destruction of the forests in the southern counties
means the destruction of the streams,
and that means the destruction of the country.**

The contentious issue reached congress and President Benjamin Harrison's desk by the early 1890s. On December 20, 1892, the President signed a proclamation creating the 555,520-acre San Gabriel Timberland Reserve (renamed the Angeles National Forest in 1908), creating the first forest reserve in California. After the passing of the Forest Reserve Act, Newcomb found himself living on federal land, his backwoods no longer governed by settlers like himself. By 1898, enticed by the \$50 per month salary promised to the nation's pioneering forest rangers, Newcomb went to work for the Department of the Interior.

Forest rangers scaling timber |
Photo: The Training of a Forester/Project Gutenberg



Forest rangers getting instruction in methods of work from a district forest official |
Photo: The Training of a Forester/Project Gutenberg

Driven Out: Louis Newcomb (CONT)

In 1900, Newcomb directed the construction of the first ranger station in California, which also had the proud distinction of being only the second built station in the United States. According to historian John Robinson, the one-room cabin along the West Fork of the San Gabriel River, built out of alder logs and incense cedar shakes -- squared by Newcomb himself -- cost \$70 to build. From this remote station, Newcomb and other early rangers patrolled the vast wilderness for illegal activity, built trails, looked out for forest fires, and helped lost hikers find their way home.

After thirteen years of service, Newcomb, ever the recluse, grew dissatisfied with the Forest Service and left in 1911. He retreated back to his beloved Chilao, no doubt hoping to escape the throngs of Angelenos tearing into the San Gabriels during the Great Hiking Era



The second ranger station built in the United States was moved from the West Fork to the Chilao Visitor Center and restored in the early 1980s. | Photo: Daniel Medina

Time and the city's eventual encroachment on the mountain frontier chipped away at Newcomb's resolve to remain steadfast in the San Gabriels. He embarked on a new stage of his life when he got married in 1920. For the next twenty years, Newcomb split his time between a new home with his wife in the foothill town of Sierra Madre and his cabin in Chilao. In 1929, he sold his property to his cousin Lynn Newcomb, who developed the two-story Newcomb's Ranch Inn to cater to weekend guests in Chilao. Then came the highway in 1939.

"[It] ruined the place," Louis Newcomb reportedly grumbled when reflecting on the Angeles Crest Highway. He left his Chilao home permanently in the early 1940s, spending the remainder of his days in Sierra Madre until his death in 1954. His name survives today in his cousin's Newcomb's Ranch, which continues to operate today as a bar and restaurant popular with visitors to Chilao. To this day, it is the only private property along the highway. It is not known if, when he departed Chilao for the final time, Newcomb was driven down the highway he so maligned, or if he choose to go on foot through the forest he knew so well. Had he walked out, it would have been fitting that -- even in his eighties -- Newcomb was still loyal to the ways of his halcyon days as the last pioneer of the mountains.

Driven Out: Louis Newcomb (CONT)



Newcomb Ranch Inn, 1930s | Photo Courtesy of Robyn Newcomb



Newcomb's Ranch on the Angeles Crest Highway | Photo: Daniel Medina

Minutes of Monthly Volunteer Meeting March 19, 2014

By Guy Kuhn

Organization Reports:

- **California Trail Users Coalition (CTUC), Hal:** Rep. Judy Chu at meeting to discuss about San Gabriel National Recreation Area Proposal. Super Sweep of San Gabriel Canyon is June 14. For information call Barry Wetherly 818-957-1455
- **Angeles Mountain Bikers and Trail Keepers, Mark:** Working Lower Merrill Trail blocking shortcuts, then will get back to Castle Canyon Trail.
- **Angeles Mountain Bike Patrol (CORBA), Robin and Mike, Steve:** Worked on crowd control at the Amgen races. Will be working at the La Cañada Memorial parade. Working Strawberry and Colby Trails, done from saddle to Red Box.. LA Conservation Corps and REI grants have 3 contractors working the trails. Also working Brown Mountain and El Prieto Trails.
- **JPL Trailbuilders, Guy:** Working the Mt Lowe West Trail towards the summit
- **Angeles National Forest Fire Lookout Association:** absent. Having training.
- **Arroyo Seco Canyon, Tom and Patty:** absent.
- **Mt Disappointment 50 K: Erik:** absent. Gary's health has greatly improved, still has an issue with atrial fibrillation, but is under control.
- **Terry Tanner:** Working at Charlton.. Upper half of Vetter Road is cleared of Poodle-dog. Still quite a few downed trees in area.
- **Scenic Mt Lowe Committee, Brian:** Doing work on the rotunda.
- **Boy Scouts of America, David:** California Trails Day at Vogel Flats was a success. Planning for National Trails Day at Chilao on June 7. Trail Boss training was held on Gabrielino Trail May 3. Worked (downfall removal) on P.C.T. north of Three Points and in Cooper Canyon from Cloudburst Summit to campground.
- **William S. Hart Trails, Kevin:** Getting ready for the next class. Had 50 applicants to choose from for the 14 slots.
- **Angeles Crest 100 Mile Endurance Run, Hal:** Working with the Angeles Forest 50K to removed downed trees on the trails. Talked to Mike McIntyre about have more chainsaw certifications/recertification's.
- **Bear Canyon, Andy:** absent
- **Tree People:** absent
- **Mounted Horse Patrol, Gene:** absent
- **Sierra Club, Don:** absent
- **Hermanos Pequenitos (My Little Brothers), Andreas:** absent
- **Boy Scouts of America, Verdugo:** absent
- **Harmokngna American Indian Cultural Center at Red Box:** absent
- **Mt Wilson Bicycle Assoc (MWBA), Mitch:** Have new green T-shirts. working with CORBA on Sunset Trail and Brown Mountain Trails, then will work Mid Merrill Trail. In June will be working in Big Tujunga on city lane to Wild Wood. May be doing their trail on National Trails Day. Surveying the Arroyo Gabrielino trail.
- **Restoration Legacy Crew (formally Grizzly Flat Trail Crew):** The World Of Chaparral trail from Georges Gap to Clear Creek Station is done. There is 2.5 miles of Lower George gap to be worked on.
- **Chantry Flats, Steven:** Having problems with break ins, Motorized vehicle users, and parking
- **Blight Busters:** absent

CONT TO P10

Minutes of Monthly Volunteer (CONT)

USFS Dennis:

- Forest Service officials will reopen on May 24 nearly all remaining areas in the Angeles National Forest closed since the 2009 Station Fire. The reopening during Memorial Day weekend of about 46,000 acres north of Altadena will offer additional summer recreation opportunities to the public including hiking, camping and picnicking.

Some forest areas will remain closed for reasons of public safety or further work needed on trails. They include Lower Gabrielino Trail (below Bear Canyon Trail), Barley Flats Trail, Colby Trail, Ken Burton Trail, Millard Water Fall User Trail, Santa Clara Divide Road (FS3N17), Messenger Flats Campground, Lightning Point Campground, and Big Buck Campground.

“Know Before You Go” to the Angeles National Forest. Find out about local conditions at your destination prior to leaving by visiting us online at: <http://www.fs.usda.gov/angeles/> .

- The Fire Danger Level is currently “Very High.” Open wood and charcoal fires are permitted only in developed campgrounds and picnic areas where a steel fire ring and grills are provided.
- Send only pictures that have the proper Personal Protection Equipment in use.

Kathy Peterson, Volunteer/Partnership Program Consultant

- **Reminder about the FOREST COMMUNITY FORUM to be held on May 28, 2014 6:00-08:30 p.m.**

VOLUNTEERS NEEDED

Dagger Flats Trail Work

Dagger Flats Trail is currently impassible. However, The Community Hiking Club will be refurbishing this trail so we can hike it together with anyone who wants to come on September 6 to celebrate the 50th Anniversary of the Wilderness Act which became law on September 3, 1964.

No experience required. Dianne will teach each of you how to properly maintain a trail. We can use up to 10 volunteers for each date. Please don't sign up if you cannot make it. Even if only ONE person signs up, Dianne will go with you! We will be working in a closed area of the forest, so it is imperative that you be on time to the meeting place. We will be going in behind a locked gate!

Meeting Place: Bear Divide Picnic area. From the I-5 freeway, take the SR-14 freeway North. Exit at Sand Canyon. Turn right. Proceed up the canyon, passing all the houses. After you have passed all the houses, you will see a sign that indicates that you are entering the Angeles National Forest. Continue up up up the hill until you see a wood sign that says Bear Divide Picnic area. Turn right. Park. This is our meeting place. If you start going downhill and the road sign has changed to Little Tujunga Road, you have gone too far. If you would like to work on the trail during the week, message Dianne and we'll try to work out some dates together.

Meeting time: 8:30 at Bear Divide. Allow ½ hour to get there from Valencia.

Dates:

- **June 1st, 8th, 29th**

RSVP to: zuliebear@aol.com

Community Hiking Club

communityhikingclub.org

661-259-2743

Dianne Erskine Hellrigel email: zuliebear@aol.com

VOLUNTEERS NEEDED



CTUC

PROUDLY PRESENTS

OPERATION SUPER CANYON SWEEP-2014

WE NEED YOU
SATURDAY, JUNE 14th, 2013
8 A.M. TO 3 P.M.

WE WILL BE CLEANING UP THE SAN GABRIEL CANYON.

**SAN GABRIEL, OHV AREA, SAN GABRIEL CANYON ROAD,
HWY 39, JUST NORTH OF THE EAST FORK BRIDGE AND
NORTH OF AZUSA**

LUNCH WILL BE PROVIDED

TO VOLUNTEER AND FOR FURTHER INFORMATION PLEASE CONTACT:

BARRY WETHERBY AT 818-957-1455 E-MAIL BHWetherby@aol.com
3700 Santa Carlotta St., La Crescenta, Ca. 91214

TERRY KAISER at 818-262-0315 E-MAIL hdconcerns@ca.rr.com

WE NEED LOTS OF VOLUNTEERS.

***CTUC IS A 501 [C] (3) NON-PROFIT CORPORATION,
ALL DONATIONS ARE TAX DEDUCTIBLE!
ID # 95-4690961 & 2028091***

Gabrielino Trail Help

VOLUNTEERS NEEDED

The Gabrielino Trail from Red Box to West Fork has been worked by volunteer crews in the past and is on the list for future trail work. Bear in mind we have over 375 miles of trails in the Los Angeles River Ranger District alone and the majority were damaged or destroyed by the Station Fire so it will be a long time before all trails are restored to a degree considered adequate. Some of the damage is so extensive that contractors have been hired to help restore the trails and in fact a project will begin on the Strawberry Peak/Colby Canyon Trail the first of next month to restore the washed-out areas. Forest Service partners such as the National Forest Foundation and Friends of the Forest are actively participating in restoration efforts. The Gabrielino Trail has had several Boy Scout Troops as well as other volunteer groups provide maintenance. We are always looking for more volunteers to assist throughout the District. If you know of anyone interested, please contact me.

Thanks,
Dennis Merkel, CPRP, FPO
District Recreation Officer
Los Angeles River Ranger District
Angeles National Forest

Phone: 818 899-1900 Ext 229 Fax: 818 896-6727 Email: dcmerkel@fs.fed.us

VOLUNTEER FUND RAISER

**The nonprofit Southern California Mountains Foundation presents SEASON 9!
@ Big Bear Discovery Center Amphitheater stage**

Introducing "World's Greatest Tribute Bands"

**All of our tribute shows have been seen on national AXS TV and
proudly voted by their fans as World's Greatest!**

And, we're pleased to announce new food and sound!!

Only the best for our guests!

Buy your tickets NOW for the 2014 season:

- **June 28th Co-Headliners**
Kenny Cetera's Chicago Experience
The Long Run, Experience the Eagles
- **July 19th DSB, America's Greatest Tribute to Journey,**
with special guest, The PettyBreakers.
America's #1 Tribute to Tom Petty and Heartbreakers
- **August 30th Led ZepAgain, A Tribute to Led Zeppelin,**
with special guest, Lighthouse Strings Orchestra
directed by Sharon Rizzo ~ all local Big Bear Students

Contact: Kathy Clapsaddle, event producer

805.750.2506

kclapsaddle@mountainsfoundation.org

The Placerita Canyon Nature Center Associates, Community Hiking Club, and the County of Los Angeles Department of Parks and Recreation present as the June Community Nature Series

The History of Placerita Canyon Natural Area

Sunday, June 8th, 2014

2:00PM

Placerita Canyon Nature Center

19152 Placerita Canyon Road

Newhall, CA 91321

(661) 259-7721

Placerita Canyon Natural Area has a rich history of human activity. The Tataviam people used the acorns gathered from the oak trees as a staple in their diet. The Portola Expedition entered the Santa Clarita Valley in 1769 and ushered in the mission era. In 1842 gold was discovered near the Oak of the Golden Dream by Francisco Lopez. This was followed by cattle ranching, oil production, and Hollywood movie production. The Walker Family owned the property from the early 1900's to 1950, and then sold it to the State of California for a park. Join us for a look back at the history of the canyon, the people who lived here, and how the current natural area facility came into existence.



Ron Kraus is the Vice President of the Placerita Canyon Nature Center Associates, the non-profit volunteer group that assists the County of Los Angeles in the operation and programming of Placerita Canyon Natural Area. He has been involved with the facility since 2002 and has been in charge of the docent training program for the past decade. Because of his interest in local history, he has developed and taught the Placerita history class for the new volunteers during this period.



VOLUNTEERS AT WORK



**Obstruction on the Pacific Crest Trail
By David Ledford**

**Obstruction is now gone thanks to the BSA Trail Crew using crosscut saws
By David Ledford**



**The MWBA in their new green trail work shirts are putting in drainages and armoring drop-offs on a rough section of Sunset Trail. They were helped by a few students and coaches from some local high school mountain biking teams as well as some other local mountain bikers.
By Banner Moffat**



VOLUNTEERS AT WORK

**Angeles Mountain Bike
Patrol helping with the
Amgen race
by McMcguire**



**Arrogant Bastards club remove a
dead tree, sawed by Hal, off the
Kenyon Devore trail next to the
water fall spot.
Carefully done of course!
By: Hal Winton**

**Angeles Mountain Bike Patrol
helping with
La Cañada Memorial parade
by McMcguire**



AC100

<http://www.ac100.com>

- **June 14th Trail Work**
Meet at Hahamongna Park-Ball Diamond at 7:00AM.
Trail work on Wintercreek Trail. High clearance vehicle recommended.
Drive down Mt Wilson Toll Rd to Harvard Saddle parking.
- **June 15th Training Run**
Meet at Finish area at Loma Alta Park at 7 AM..
Day time run to Finish area.
- **June 21st Training Run**
Meet at Islip Saddle at 8 AM. ATTENTION

VOLUNTEERS ARE NEEDED:

- 1) help at several aid stations and
 - 2) medical volunteers at aid stations i.e. Paramedics, Nurse, EMTs, First Aid.
 - 3) trail marking
 - 4) trail sweep (preferably with HAM radio).
- If you are available on August 1/2/3, 2014 (Fri/Sat/Sun),
Please contact: ken.hamada3@gmail.com Any help will be appreciated.

VOLUNTEER GROUP NEWS

Angeles Mountain Bikers and Trail Keepers

Mark Gage mr33@hotmail.com

- **Trail Maintenance-** "Gardening by the Mile not the Yard."....
Hikers and Bikers working together on trails. We work on the trails almost every Saturday.
Our focus trails are Lower Sam Merrill, Castle Canyon and Echo Mt. Trails.

Angeles Mountain Bike Patrol

m.rmccuire@hotmail.com

. Our mission is to provide educational and a responsible image to all trail users. To encourage rider's to obey forest regulations and working to preserve and protect trails. A.M.B.P is here to serve and inform the public

Angeles 50k/25k

<http://angelesforest50k.com/>

Formerly Mt Disappointment 50K Conservation Group

Eric LeClair

Eric@AngelesForest50k.com

626-437-8739

- **June 2nd - Registration closes: @ 11:59PM**
- **June 28th – TBD**

Welcome to the Angeles Forest 50K/25K where you can experience some of the finest trails and canyons of the San Gabriel Mountains. Our course is incredibly scenic, yet strenuous and challenging. We feature fully stocked aid stations as you become part of the semi-wilderness surroundings. The final climb to the summit of Mt Wilson up the Kenyon Devore Trail will test each runner with terrain and surroundings that are truly unique to these canyons.

ANGELES NATIONAL FOREST FIRE LOOKOUT ASSOCIATION

<http://www.anffla.org>

Pam Morey pammorey@fs.fed.us
Forest Care Program Coordinator
909-744-9510 ext. 125



VOLUNTEER GROUP NEWS

- **BECOME A FIRE LOOKOUT!** It's probably easier that you realize to become an active Fire Lookout with the ANFFLA. It just takes a few classes training (which are quite fun!) and the desire to spend some time in the Angeles National Forest. For more information about becoming a fire lookout pammorey@fs.fed.us or 909-744-9510 ext. 125

- **Help rebuild Vetter Mtn Fire Lookout with a purchase of a reusable tote bag for \$5.**

- **Help support ANFFLA every time you shop!**

Register your Ralphs Club Card and your Food4Less card and ANFFLA will receive a donation every time you shop. It's an easy to help support our efforts and costs you nothing!

Antelope Valley Conservancy

www.avconservancy.org

avconservancy@yahoo.com Face book: Antelope Valley Conservancy

PHONE (661) 943-9000

- **Looking for a sustainable gift? Consider giving a Membership in Antelope Valley Conservancy. Only \$25. A gift that keeps on giving.**
- **If you use Google or any other search engine, please try GoodSearch.com to help us build the Sustaining Endowment. Just type "av conservancy" as your charity and Yahoo donates a penny for each search- at no cost to you! Do it now, so you don't forget. Thank you!**

Arroyos and Foothills Conservancy

<http://www.arroyosfoothills.org/>

John Howell, (626) 796-0782 johnrhowell@earthlink.net

Face book: Arroyos & Foothills Conservancy

- **Eaton's Water <https://www.youtube.com/watch?v=U-s-pF5Ycy0>**

AFC in 2006 commissioned a 15-minute film, "Eaton's Water," about Benjamin Eaton's efforts to bring water to the future site of Pasadena in the late 19th century. Developed with the Art Center College of Design, the film was based on a short story by author Michele Zack and directed by Sally Levi.

- **Cottonwood Campaign is heating up!**

We are excited to announce that the Santa Monica Mountains Conservancy has offered a 2-1 match to help fund a portion of our Cottonwood project. For every \$1 you donate, SMMC will match it with \$2 until our combined total reaches \$25,000, enabling us to complete a critical biological survey needed to obtain government funding. This is a fantastic opportunity to help save Cottonwood Canyon

Go to: <http://www.arroyosfoothills.org/cottonwood/> to take advantage of this opportunity and learn more about Cottonwood Canyon.

Audubon Center at Debs Park

4700 North Griffin Ave. Los Angeles, CA 90031

PHONE: (323) 221-2255

Contact : http://debspark.audubon.org/email/1617/field_location_email

Calendar: <http://debspark.audubon.org/events>

BEAR CANYON TRAIL CREW

- **Jun 14th Outing** Temp. 68° (avg.) 13th-17th Sunny inland

There is plenty to be done for these first few months as we fix what has deteriorated over the summer on this heavily used trail. There is easy work to be done with loppers and trimmers and more serious tread repairs to perform as well. In addition, we will be joined by a chainsaw crew and they can always use some swampers to clear what they've cut. I have plenty of McLeod's, shovels, and pick-mattocks for the heavy work and a few saws, loppers and trimmers for the smaller work. However, if you have your own tools feel free to bring them.

Link to subscribe to Bear Canyon List: http://eepurl.com/ID_Rr

Blight Busters Trail Crew

Danny Treadway dayhiker86@yahoo.com

Boy Scouts of America Los Angeles Area Council

<http://www.laac-hat.org/>

- **June 7th, 2014 National Trails Day** See page 3
- **Sept 6th, 2014 Trail Boss (Advanced)** See page 4

Big Santa Anita Canyon

<http://www.bigsantaanitacanyon.com/>

- **June 1st Live Music** 12:00 – 5:00: Big Santa Anita Canyon Music Fest
- **June 8th Live Music**
12:00 – 1:30: Steven Bejarno 1:45 – 3:15: The Subs 3:30 – 5:00: Sandy Ross
- **June 22nd Live Music**
12:00 – 1:30: Tim Tedrow 1:45 – 3:15: Wild Mountain Mystics 3:30 – 5:00: Terry Okey's Cactus Jam
- **Open Year round, 6 am to 8 pm every day.**
- **The road is gated and the gate is locked at night.**
Be sure to return to your car before 7:30 pm or you may not get out!
During and after heavy rains, fires, or after significant earthquakes, and during fire alerts the road may be closed.
- **The Sierra Madre Police Dept. is in charge of locking/unlocking the gate. If you are concerned that the road might be closed you can call them for info: 626 355-1414.**
- **Adams Pack Station Contact:**
Friday, Saturday & Sunday 8:00 am - 5:00 pm (626) 447-7356

California Trail Users Coalition (CTUC)

<http://www.ctuc.info/ctuc/>

- **June 18th MEETING** Come and Join Us CTUC meets on the 3rd Wednesday of every month at 5:00 p.m. at 3550 Foothill Blvd., Glendale, CA.

Our meetings are open to everyone who wishes to participate. Volunteers have a great time working together on these types of projects. To volunteer on one of our projects, please join us by calling our Chairman, Terry Kaiser at 818-353-4682. You may also email: edwaldheim@aol.com

- **CTUC MAPS** The first map in our series was completed in 2005 and now, several years later, there are eight maps in print with as many as four more in the works. CTUC maps are unique in that they are not complete inventories of routes. Instead they are travel guides to the area with selected routes shown.

For more information: <http://www.ctuc.info/ctuc/index.php/maps>

Community Hiking Club

communityhikingclub.org 661-259-2743

Dianne Erskine Hellrigel email: zuliebear@aol.com

• **June 1st - Dagger Flats Trail Work**

As part of the 50 year Wilderness Act Celebration this year, we will be restoring a trail that has been unused for about 30 years. We will be hiking this trail on September 6, following the actual anniversary of the passage of the bill on September 3. I can only take 10 people per date, so please RSVP to Dianne (zuliebear@aol.com) as soon as possible.

Directions to meeting spot: Take the I-5 freeway to the SR-14 Freeway. Exit Sand Canyon Road. Turn right. Go all the way past all the houses. You will then enter the Angeles National Forest. From the forest sign, go all the way up up up the mountain to Bear Divide. There will not be a road sign, but you will see Bear Divide Picnic area on your right. If you start going downhill, you've gone too far. Park at the Bear Divide picnic area. We will meet here at 7:30, and depart for the trail head at 7:40. Please be prompt.

Time 7:30 meeting time to 1:00 or 2:00.. This will also include some hiking-it is 4 miles to the trail head! Bring water, snacks/lunch, camera, Band-Aids, TP (there are no bathrooms), hand wipes, garden gloves, sunscreen, and a hat. Thank you for being a part of this.

Leader: Dianne **Rated:** Strenuous

• **June 7th - Slide Mountain**

Today we are hiking to the top of Slide Mountain through a previous burn area. This is 12 miles round trip on a steep trail. We will hike to the fire lookout on the top of the mountain. There are incredible views of Lake Pyramid and Lake Piru. You will also see a 360 degree view from the top. This is a tough hike, and beginners are not advised to try the entire trail. If you are beginning, it is suggested that you try the first couple of miles, then return to your vehicle. Adventure passes are required for parking in the Angeles National Forest at this spot. There should be a lot of flowers, and great photo opportunities up above, so bring your camera. Steve will also point our Piru Creek, which is a Native California Fishery.

MEET: We will meet at the outside gate of Towsley Canyon at 7:30 for a 7:45 departure to the trail head above Castaic. We will be carpooling to the trailhead above Castaic on I-5, about 20 minutes away.

Bring lunch, snacks, more water than you think you will need (3 liters is recommended, poles, and hiking boots with good tread.

To meet at the trail head: Go north on I-5, exit Templin Hwy, turn left. Go under the freeway, and turn right. Follow this road until it ends at a white forest service gate. Park. Display your Adventure Pass in your windshield. Meet us at the gate at 8:10 (approx)

RATED: Difficult (Easy/moderate hikers are encouraged to try the first few miles)

Leader: Steve **Rated:** Difficult

• June 8th-Dagger Flats Trail Work-

As part of the 50 year Wilderness Act Celebration this year, we will be restoring a trail that has been unused for about 30 years. We will be hiking this trail on September 6, following the actual anniversary of the passage of the bill on September 3. I can only take 10 people per date, so please RSVP to Dianne (zuliebear@aol.com) as soon as possible.

Directions to meeting spot: Take the I-5 freeway to the SR-14 Freeway. Exit Sand Canyon Road. Turn right. Go all the way past all the houses. You will then enter the Angeles National Forest. From the forest sign, go all the way up up up the mountain to Bear Divide. There will not be a road sign, but you will see Bear Divide Picnic area on your right. If you start going downhill, you've gone too far. Park at the Bear Divide picnic area. We will meet here at 7:30, and depart for the trail head at 7:40. Please be prompt.

Time 7:30 meeting time to 1:00 or 2:00. This will also include some hiking-it is 4 miles to the trail head! Bring water, snacks/lunch, camera, Band-Aids, TP (there are no bathrooms), hand wipes, garden gloves, sunscreen, and a hat. Thank you for being a part of this.

Leader: Dianne **Rated:** Difficult

• June 14th -Pico Canyon

This is a great 8 mile round trip hike with about 800 ft of gain. The first 2 miles of the hike is on a paved road to California Star Oil #4 Oil well (later to become Standard Oil of California. This part of the route is a gentle, mostly flat 2 miles. Once we see the ruins of California Star Oil #4, we will begin to climb the next 2 miles to the top. At the top will be a table where you can have lunch, snacks, and relax. The views are amazing at this point! On our return, we will take a different, more challenging but shorter trail back to see a mock- up of an oil well, an old bar and a dance and recreation area. From there, we will return to our vehicles.

Meet at the parking area in Mentryville at 8:00 AM, for an 8:15 departure.

Bring lots of water, snacks, camera and wear boots with lots of tread for the return hike where you will be making your way down a small waterfall. Wear a hat, sunscreen and definitely bring poles if you have them.

Directions: Take Lyons Avenue WEST. It will become Pico Canyon. Continue on Pico until it ends. It will end in the town of Mentryville. Go over the bridge and park close to the big pepper tree by the rest room, where Dianne will meet you. You must pay MRCA parking to park here of \$5.00. If you wish to avoid this parking fee, you can park outside the green entry gate for free, and walk in, but allow an additional 40 minutes to walk in.

Leader: Steve **Rated:** Easy to Moderate
(Beginners are encouraged to do the first 2 miles in and out)

• June 14th -Dagger Flats Trail Work

As part of the 50 year Wilderness Act Celebration this year, we will be restoring a trail that has been unused for about 30 years. We will be hiking this trail on September 6, following the actual anniversary of the passage of the bill on September 3. I can only take 10 people per date, so please RSVP to Dianne (zuliebear@aol.com) as soon as possible.

Directions to meeting spot: Take the I-5 freeway to the SR-14 Freeway. Exit Sand Canyon Road. Turn right. Go all the way past all the houses. You will then enter the Angeles National Forest. From the forest sign, go all the way up up up the mountain to Bear Divide. There will not be a road sign, but you will see Bear Divide Picnic area on your right. If you start going downhill, you've gone too far. Park at the Bear Divide picnic area. We will meet here at 7:30, and depart for the trail head at 7:40. Please be prompt.

Time 7:30 meeting time to 1:00 or 2:00. This will also include some hiking-it is 4 miles to the trail head! Bring water, snacks/lunch, camera, Band-Aids, TP (there are no bathrooms), hand wipes, garden gloves, sunscreen, and a hat. Thank you for being a part of this.

Leader: Dianne **Rated:** Difficult

• June 21st -Switzer Falls

This is a relatively easy hike into one of the most lovely sections of the San Gabriel Mountains. The hike meanders back and across the stream funning down the spectacular Arroyo Seco Canyon. The stream in lined with oaks and alder, with the water cascading over granite into mirror-like pools. The hike travels high above the 50 foot high Switzer falls, then drops back to the stream, where hikers can double back to stand at the base of the falls. The hike is 4.5 miles in and out with a 600 ft elevation gain, and most of that is in one short section. An Adventure pass is required for those who drive!

BRING: Poles, lunch, snacks, water

Meet at Towsley Canyon to carpool at 7:15 or the Trail Head at 8:30.

Directions to Trail head: From I-210 in La Canada, take Highway 2 north and drive 10 miles to the Switzer Picnic area, which will be on the right. Descend to the parking area outside the campground. You will see a foot bridge over the stream, leading to the trail head. (Lat:34.2663 Lon:118.1336)

Directions from Palmdale: Take the Angeles Forest Hwy to the intersection with the Angeles Crest Hwy (2), turn left and you will see the road to the parking lot on the right side less than 1/2 mile after the intersection.

To carpool from Towsley, please meet at 7:15 for a 7:30 departure to the trail head.

Directions to Towsley meeting spot: From Valencia, take the I-5 South to the Calgrove exit. Exit. Turn right. Go through the signal and immediately turn right into the driveway for Towsley Canyon. Park OUTSIDE the gate. Look for the hiking club members and leader here.

See map below:

<https://maps.google.com/maps?saddr=Towsley+Canyon+Park,+24255+The+Old+Road,+Newhall,+CA&addr=Switzer+Falls+gate,+Angeles+Crest+Highway,+CA&hl=en&sll=34.429001,-118.215637&sspn=0.148954,0.273285&geocode=FeIwDAIdOhDv-CHuI9zisWY8JyIFrh4BJITCgDHuI9zisWY8Jw%3BFfLmCgId6jr1-CHyQYAy-Zu1ZCmJCmd27-jCgDHuI9zisWY8Jw%3BFfLmCgId6jr1-CHyQYAy-Zu1ZA&oq=towsl&mra=ls&t=m&z=11>

Leader: Steve

Rated: Moderate

• June 21st -Dagger Flats Trail Work

As part of the 50 year Wilderness Act Celebration this year, we will be restoring a trail that has been unused for about 30 years. We will be hiking this trail on September 6, following the actual anniversary of the passage of the bill on September 3. I can only take 10 people per date, so please RSVP to Dianne (zuliebear@aol.com) as soon as possible.

Directions to meeting spot: Take the I-5 freeway to the SR-14 Freeway. Exit Sand Canyon Road. Turn right. Go all the way past all the houses. You will then enter the Angeles National Forest. From the forest sign, go all the way up up up the mountain to Bear Divide. There will not be a road sign, but you will see Bear Divide Picnic area on your right. If you start going downhill, you've gone too far. Park at the Bear Divide picnic area. We will meet here at 7:30, and depart for the trail head at 7:40. Please be prompt.

Time 7:30 meeting time to 1:00 or 2:00. This will also include some hiking-it is 4 miles to the trail head! Bring water, snacks/lunch, camera, band aids, TP (there are no bathrooms), hand wipes, garden gloves, sunscreen, and a hat. Thank you for being a part of this.

Leader: Dianne

Rated: Difficult

**Crescenta Valley Trail Crew
aka CV Trail Crew****Karen Buehler 818-363-6216****karen.buehler2@gmail.com****Face book: <http://www.facebook.com/#!/cvtrail.crew>****• June 6th, 7:00 AM to 12:00 PM-****World of Chaparral Trails- George's Gap, ANF****HABITAT WORKS****<http://www.habitatwork.org>****Kim Clark or Tom Persons 818-353-4653****For more information call or e-mail to: wildlife@habitatwork.org****Haramokngna American Indian Cultural Center****www.haramokngna.org**

663-449-8975.

• Volunteers As a cultural, environmental and arts organization, Haramokngna American Indian Cultural Center shares the flavor of Native American history, culture, traditions and arts with the Los Angeles community. We are always looking for energetic individuals ready to represent the Cultural Center during special events and regular office hours.

• Check the Pukuu's Amazon Store <http://astore.amazon.com/pukucultcomms-20>

When you order items thru our store, a percentage is donated to our center. THANK-YOU

High Country Riders

Forest wide equestrian volunteer group that packs Equipment, Material and Supplies etc. to your Trail or worksite. Packs Trash & Rubbish out of the Forest.

Contacts: Jonathan Schultz 951-830-3400 maujds@earthlink.net

• Forest Certified Animal Packer, • Master Teacher for "LNT",

• "C" Crosscut Saw Certifier • Chainsaw "B" faller

Contacts: Glen Foster 760-949-3497 or 760-508-0344 pjgwfoster@aol.com

• Certified Packer

JPL TRAILBUILDERS**Kathie Reilly 818-354-8321 (JPL)****Jack Russell 562-861-3187****(Rain day before or day of outing cancels the outing)****• June 7th is National Trails Day – See page 3****• June 28th Outing**

WHAT'S HAPPENING: Now that we know the Mt Lowe fire road is passable, we can continue trying to complete our maintenance on the Mt Lowe West Trail towards the summit. We have a shortcut we drive to about the middle of the trail, with a steep hike from the road up to the trail. There is poodle dog to remove, along with regular brushing and trail widening. When we finish this trail, or If there are issues driving up the Mt Lowe fire road, we can continue work on the South San Gabriel Peak Trail.

Mount Wilson Institute

P. O. Box 1909, Atlanta, Georgia 30301-1909
(404) 413-5484 <http://www.mtwilson.edu/>

- **Cosmic Cafe is opened** The Cosmic Cafe and our weekend 1 pm guided tour program will be open Saturday through Sunday, 10 am until 5 pm. The Cosmic Cafe will once again offer food, drink, souvenirs, and a stimulating visit to Mount Wilson throughout the season. You can still arrange for a Special Tour of the Observatory for any day of the week, not just weekends.

Support Mount Wilson Observatory

We Need Your Help - Mount Wilson Observatory is privately owned and receives no continuing state or federal support. You can help ensure the continued operation of this science heritage.

- **Join** our Friends of Mount Wilson Observatory organization to receive a variety of member benefits and stay informed on the latest scientific and other activities from the mountain.
- **Contribute** to our Second Century Campaign. As Mount Wilson continues into its second century, a capital campaign is being developed to preserve this great observatory for future generations.
- **Be a Docent Tour Guide** - We welcome applications from individuals interested in participating as docents in our very active guided tour programs.

For application information go to: <http://www.mtwilson.edu/docents.php>.

Mount Wilson Race

The Mt. Wilson Trail Race was run on Memorial Day Saturday, 317 finishers who enjoyed great race conditions, especially a trail groomed by volunteers over the past four months. Go to www.mountwilsontrailrace.com for more information.

Pete Siberell

Chair, Mt. Wilson Trail Race

Mount Wilson Race Opening Ceremony



Mount Wilson Bicycling Association

<http://mwba.org/> @ on Facebook

Contact: Mitch Marich, info@mwba.org

- **June 18th 8:00 am - 1:00 pm,**

We'll continue to work on Middle Merrill unless another need arises.

- **Aug 20th - 24th**

IMBA World Summit

In case you haven't heard, MWBA has made the commitment to do trail work at least once a month this year. Mark your calendars for the 3rd weekend of every month. We will publish the details each month, but expect to find us on one of our local San Gabriel Mountain trails. Along with our scheduled monthly trail days, Banner Moffat continues to work on El Prieto on Fridays. Feel free to send us an email if you can't make it on the weekends, but have time on Fridays. info@mwba.org

Pacific Crest Trail Association <http://www.pcta.org>

FACE BOOK: <http://www.facebook.com/#!/PCTAFan>

Liz Bergeron lbergeron@pcta.org

Sacramento, CA Phone: (916) 285-1846 x 2

- **Jan 1st - Dec 30th. 'Fannypack' Projects [FALC]. SBNF, ANF, CNF, and BLM.**

Swat teams to inventory trail, clear trees and boulders, and repair slides on short notice.

Open to qualified volunteers.

Contact: Pete Fish, Email: pickaxepete@sbcglobal.net, Tel.: 805-658-6540

or: John Hachey Email: goaliejhachey@msn.com, Tel.: 909-605-3219

SAN GABRIEL TRAILBUILDERS

<http://www.sgmtrailbuilders.org>

Ben White: 626-303-1078

ben@sgmtrailbuilders.org

We work on the first, third, and fifth Saturday of each month Trail working volunteers may join the San Gabriel Mountains Trail Builders in the continued restoration process for trails in and around Crystal Lake, East Fork, Heaton Flats, Upper & Lower Bear Creek, the Baldy Area and many other locations on the Angeles National Forest.

Learn how to use all the Trail tools to work the trails. Help you learn how to get your certificates for Chainsaw and Crosscut Saws use on the National forest.

If you would like to volunteer your time, please send e-mail to feedback@crystallake.name

I will let you know when, where, and what you need to know to join us.

MEETING LOCATION :

San Gabriel Canyon Gateway Center,
1950 North San Gabriel Canyon @ 7:30 am

SCENIC MT. LOWE RAILWAY

<http://www.mtlowe.net/>

Brian Marcroft

562-868-8919

E-mail: Emworks@verizon.net

VOLUNTEER GROUP NEWS

Angeles Mountain Bike Patrol has reported a bear at the La Cañada Memorial parade by McMcguire



Sierra Club

www.angeles.sierraclub.org/pasadena/

VOLUNTEER GROUP NEWS

Angeles Chapter Office
3435 Wilshire Blvd. #660, Los Angeles, CA. 90010-1904
213-387-4287

For more calendar details go to <http://www.angeles.sierraclub.org/pasadena/outings2.asp>

- **June 4th 7:00 PM**

Pasadena Group Monthly Meeting: Peter Eisenhardt, a member of the Pasadena Chapter of the Citizens Climate Lobby presents, "**Addressing Climate Change via a Carbon Tax: How would it work?**" Information will also be provided about the status of Congressional efforts to enact meaningful climate change legislation. In addition, learn about our Group's hikes, outings, and conservation activities. Newcomers always welcome. Doors open at 7 pm, program at 7:15 pm at Eaton Canyon Nature Center, 1750 N Altadena Dr in NE Pasadena. For information contact Group Membership Chair, Elizabeth Pomeroy

- **June 12th/19th/26th Henninger Flats Conditioning Hike**
- **June 14th West Waterman-Three Points to Incense Cedar Meadow**
- **June 7th Newcomers Potluck Picnic**
- **June 21st Throop Pk (9138') and Mt Hawkins (8850')**
- **June 28th Devil's Canyon Dinner Potluck**
- **June 11th/25th Evenings in the Arroyo**

- **July 1st Pasadena Group Support Event Summer Benefit**

Sale at Ten Thousand Villages at Ten Thousand Villages (567 S. Lake Ave, Pasadena 91101): Stop by any time between 3 and 8 PM for complimentary coffee and chocolates, and linger to consider purchasing hand-crafted items made by indigenous people from around the world at this special event. Identify yourself as a Sierra Club member and a percentage of proceeds from your purchases at this non-profit organization, located at, will benefit Pasadena Group's conservation and outreach activities. Come early and then join our Group's Benefit Night Dinner at nearby Burger Continental, just a few doors up the street. Coordinator, David Czamanske

- **July 1st Pasadena Group Support Event Summer Benefit**

at 14535 South Lake Avenue, Pasadena, CA 91101, USA Summer Benefit Night at Burger Continental: Join us for an evening of good food and casual conversation, and learn about our group's summer and autumn outings and conservation activities. A percentage of proceeds from your meal order will benefit Pasadena Group conservation and outreach activities. Dinner 5 PM - 8 PM (come any time) in rear dining room of Burger Continental Park, 535 S Lake Ave, Pasadena 91101. Park in parking lot at rear (read time limit signs carefully), or on Hudson to the west, or on Lake Ave (free after 6 PM, but pay before then!). Coordinators: David Czamanske, Elizabeth Pomeroy

SOUTHERN CALIFORNIA MOUNTAINS FOUNDATION

<http://mountainsfoundation.org/>

Sarah Miggins smiggins@fs.fed.us 909-382-2796
602 South Tippecanoe, San Bernardino, California 92408

For more calendar details go to <http://mountainsfoundation.org/calendar?year=2014&month=06>

- **Intro to Geocaching June 7th/28th**
- **Build a Birdhouse June 14th/28th**

Tree People <http://www.treepeople.org>

FACEBOOK: TreePeople

12601 Mulholland Drive

Beverly Hills, CA 90210 Telephone (818) 753-4600

For more calendar details go to: <http://www.treepeople.org/calendar/2014-06>

- Campus Orchard Care June 7th
- Drought Response Park Tree Care June 7th/8th/21st/22nd
- Moonlight Hike June 13th
- Park Work Day June 5th/12th/14th/19th/20th/26th
- Santa Monica Mountains Restoration June 7th/15th/21st/22nd
- Street Tree Care June 28th
- Santa Monica Mountains Supervisor Training June 14th
- Volunteer Supervisor Training June 28th

**William S Hart UHSD of
Santa Clarita ANF Crew 135**

Kevin Sarkissian

661.250.0022 X 552

ksarkiss@hartdistrict.org

www.hartrop.com/forestry



Good afternoon all,

Building on the success of previous years, the William S Hart UHSD plans to hire a crew of 14 local high school students for a two week, 60 hour paid work opportunity during the weeks of June 9th and 16th. This unique work experience represents an ongoing collaborative with the USFS and other state and local natural resource management agencies.

Week of June 9th (includes 1 hour, non paid lunch break): 6/9 8-430 pm (7.5 hrs) - TBD (USFS)

6/10 8-430 pm (7.5 hrs) - TBD (USFS)

6/11 8-430 pm (7.5 hrs) - TBD (USFS)

6/12 8-430 pm (7.5 hrs) - TBD (USFS)

Week of June 16th (includes 1 hour, non paid lunch break):

6/17 8-430 pm (7.5 hrs) - TBD (USFS)

6/18 8-430 pm (7.5 hrs) - TBD (USFS)

6/19 8-430 pm (7.5 hrs) - Towsley or Wildwood Canyon (MRCA / City Santa Clarita)

6/20 8-430 pm (7.5 hrs) - Quigley or Wildwood Canyon (City of Santa Clarita)

Kevin Sarkissian

Lead Instructor

W S Hart Union High School District

Outdoor Recreation and Wilderness Conservation - ANF Crew 135

Regional Occupational Program

21515 Centre Pointe Parkway

Santa Clarita, CA 91350

661.877.7024

661.250.0022 X 552

www.hartrop.com/forestry

Volunteers of the Angeles National Forest

Wrightwood, CA <http://www.grassyhollow.net>

Visitor Center Phone #: (626) 821-6737 Loren Lake lorenll@verizon.net

VOLUNTEER GROUP NEWS

•The Grassy Hollow Visitor Center and Grounds are open for day-use only

Hours: Saturdays, Sundays and Holidays 10:00 am to 4:00 pm

Weekdays- for school groups, youth organizations, etc. By Appointment

• June 1st 1:30 PM Big Horn Mine Hike

Join us for a hike to a famous lode Gold Mine. Perfect for history buffs. Bring a camera, water, a snack and wear sturdy shoes.

Approx: 4 miles round trip. Easy to moderate hike.

Location: Vincent Gap parking lot

Leader: Sabrina Johnson, Vice-President, Volunteers of the Angeles National Forest

• June 7th 1:00 PM Geology of the Area

What's underfoot in the San Gabriel Mountains? Learn about the topography of our area, inspect our relief map created by a Student from Serrano High School for his Senior Project in 2012, and hear his teacher present a DVD another Serrano student is completing for his 2013 Senior Project.

Time Approx. 1 hour.

Location: Grassy Hollow Visitor Center.

Leader: Loren Schneider, Geology Teacher, Serrano High School, Phelan, CA

• June 8th 10:00 AM – 4:00 PM Grassy Hollow Visitors' Center Open

Come up and enjoy our natural surroundings at Grassy Hollow Visitor Center. Bring a picnic lunch and enjoy the cool mountain air. Take our one-mile loop on the Pacific Crest Trail and catch a beautiful view of the Antelope Valley (easy hike), hike to the Big Horn Mine (moderate), or hike to Mt. Baden Powell (strenuous). Directions for hikes are at the Center.

• June 13th 7:45 PM NEW!! NEW!! Full Moon Hike

Come join us for a beautiful moonlight hike in the Angeles National Forest! Bask in the full moon as it lights our way through the forest. Hear the critters and other forest wildlife. See the beautiful Antelope Valley City lights below us. Bring a jacket, sturdy shoes, water and a flashlight.

Approx. 2 miles.

Location: Grassy Hollow Visitor Center.

Leader: Sabrina Johnson, Vice-President, Volunteers of the Angeles National Forest.

• June 14th & June 15th 10:00-4:00 Grassy Hollow Visitors' Center Open Father's Day Weekend

Come up and enjoy our natural surroundings at Grassy Hollow Visitor Center. Bring a picnic lunch and celebrate Father's Day. Take our one-mile loop on the Pacific Crest Trail and catch a beautiful view of the Antelope Valley (easy hike), hike to the Big Horn Mine (moderate), or hike to Mt. Baden Powell (strenuous). Directions for hikes are at the Center.

• June 21st, & June 22nd 10:00-4:00 Grassy Hollow Visitors' Center Open

Come up and enjoy our natural surroundings at Grassy Hollow Visitor Center. Bring a picnic lunch or simply hike one of our marked trails. Take our one-mile loop on the Pacific Crest Trail and catch a beautiful view of the Antelope Valley (easy hike), hike to the Big Horn Mine (moderate), or hike to Mt. Baden Powell (strenuous). Directions for hikes are at the Center

• June 28th & June 29th Visitor Center Open 10:00-4:00 each day Wrightwood Mountaineer Days

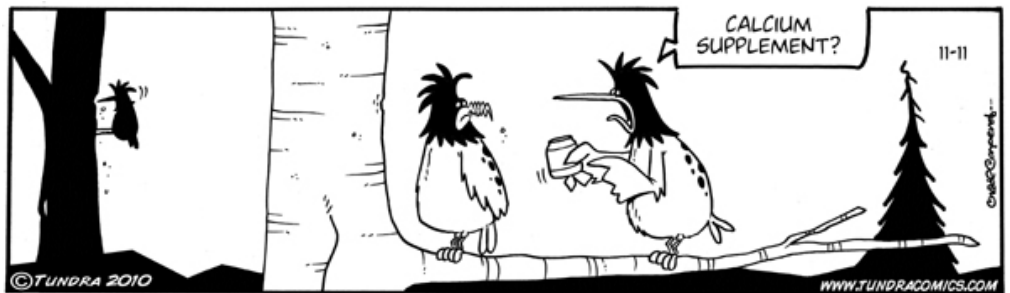
Enjoy the celebration, quilt auction, food, and festivities in town on Park Drive, Wrightwood; then, come to Grassy Hollow and enjoy nature. Have a picnic and do a hike! Directions for hikes are at the Visitor Center. No special programs planned for Grassy Hollow this weekend.

• July 5th & July 6th, 2014 10:00 AM – 4:00 PM July 4th Weekend

Get out of the heat and enjoy your holiday weekend with a cool trip to the Angeles National Forest. Check out campsites by visiting www.ReservedUSA.com for reservations. Or simply hike our marked trails and have a picnic at the tables at Grassy Hollow Visitor Center. Directions for hiking and camping are at the Center. No special programs this weekend.

Los Angeles River Ranger District
12371 North Little Tujunga Canyon Road
San Fernando, CA 91342

TUNDRA by Chad Carpenter, Los Angeles Times Nov 11, 2010 email: info@tundracomics.com



Volunteer Today
Send this in Right Away to
Dennis Merkel —12371 N. Little Tujunga Canyon Rd
San Fernando, CA 91342

Name _____
Address _____

Phone # (hm) _____
e-mail _____

Interests

Indicate what you would like to do. Circle area or enter your interests.
Campground Host/ Visitor Information/ Smokey Bear - Fire Prevention/
Recreation Aid / Forest Patrol /Resource Management / Computers/
Research-Librarian / Office Clerical / Tour guide/ Fire Lookout/
Conservation Education / habitat restoration and tree planting

Other: _____
